



# DUAL CS 418

MANUAL HIFI-TURNTABLE



# THE ENTRY-LEVEL RECORD PLAYER FOR THE MANUAL DUAL CS SERIES

The turntable series starts with the CS 418, which integrates high-quality components from the larger models and already places the highest emphasis on precision.

With the Ortofon 2M Red cartridge and switchable MM phono preamplifier, the CS 418 not only offers outstanding value for money, but also a very balanced sound.

Ease of use is guaranteed with the characteristic features of the CS series. The stepless antiskating can be easily adjusted using a rotary knob with a clear scale. The electronic adjustment of the three speeds is conveniently carried out via a rotary switch, while the appropriate pickup can be easily changed using the headshell.

**ROBUST, PRECISE, RELIABLE, WITH A 5-YEAR WARRANTY  
FOR CAREFREE MUSIC ENJOYMENT**

# THE NEW DUAL CS-SERIES

DEVELOPED IN OUR OWN  
DESIGN CENTRE IN GERMANY

## PRECISION

From clockwork to turntable

## QUALITY

5 year warranty

## TRADITION

Building turntables for generations



< ALFRED LANGER  
ABOUT THE NEW  
DUAL CS-SERIES



# INTERCHANGEABLE HEADSHELL

DUAL TECHNOLOGY

---

## **Quick and easy**

Thanks to the screw mechanism for the headshell and simple adjustment options for tracking force and anti-skating, changing the headshell takes less than a minute.

## **Always correctly adjusted**

Our turntables make it easy to change cartridges without having to readjust them. Your cartridge is mounted and adjusted correctly once so that subsequent changes can be carried out effortlessly. Discover the efficiency and precision of our turntables, which meet the highest standards of user-friendliness.



# SPRING LOADED ANTISKATING

DUAL TECHNOLOGY

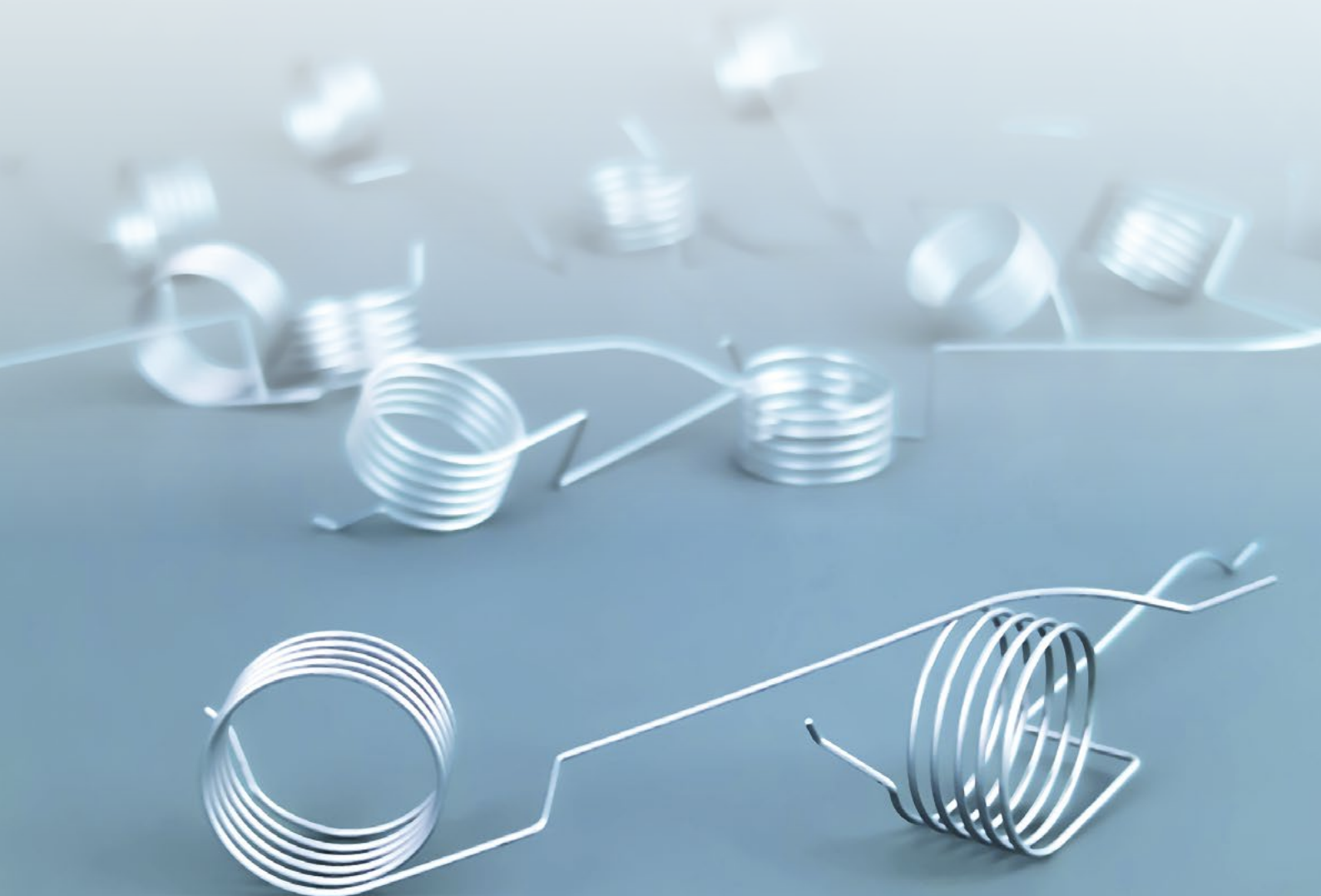
---

## **Stepless adjustment for fine tuning**

Dual turntables offer stepless adjustment using a rotary knob, without predetermined increments. The easy-to-read scale serves as a guideline for quick and easy adjustment of the antiskating.

## **Precise skating correction**

An ingenious mechanism with a specially shaped spring ensures precise skating compensation over the entire playback range. Experience precise adjustment for optimum sound quality with this system.



# PLINTH: SOLID MDF

---

- MDF construction with a black vinyl veneer
- Elastomer vibration absorber inside the feet
- Removable dust cover



# PLATTER: ALUMINIUM DIE-CAST

---

- Aluminium die-cast, long term precision
- Heavy rubber mat for resonance damping
- Hardened steel spindle in a brass bushing





# TONEARM: STRAIGHT, STATICALLY BALANCED

---

- Solid aluminium construction with ball-bearings
- Damped tonearm lift
- Accurate spring loaded antiskating





# DRIVE: DC- MOTOR / BELT

---

- Selector switch for 33 / 45 / 78
- Rubber mountings for vibration decoupling
- Precision cut belt for lower wow & flutter



# DUAL TECHNICAL SPECIFICATIONS

## DUAL CS 418

### MOTOR

Drive	Belt
Speed settings	33/45/78
Wow & Flutter	< ±0,1 % (DIN rated)

### ONEARM

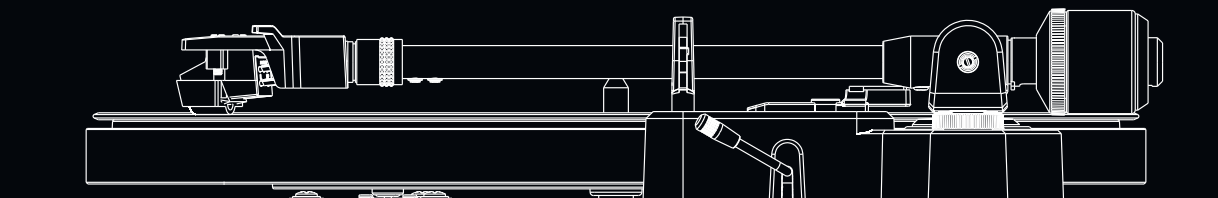
Auto-Start/-Stop-Function	X
Bearing	Ball-bearing
Effective length	221,5 mm
Offset angle	25,6°
Overhang	19 mm
Type	Statically balanced
Stylus pressure range	0 g to 4 g
Cartridge weight range	5 g to 9 g
Factory installed pick up	Ortofon 2M Red

### PLATTER

Material	Aluminium die-cast
Mat	Rubber 2,5 mm
Bearing	Hardened steel spindle Brass bushing
Diameter	305 mm
Weight (incl. Mat)	850 g

### PLINTH

Material	MDF
Surface finish	Vinyl veneer / Black
Feet	Ø 62 mm / Elastomer
Connection	RCA socket
Connection to phono input	✓
Connection to line input	✓
Digital Output	X
Dimension, closed dustcover	435 x 367 x 145 mm
Dimension, open dustcover	T: 415 mm / H: 400 mm
Weight	5,8 kg



# Dual

Dual

**5 YEAR  
WARRANTY**

