

DUAL CS 429

FULLY AUTOMATIC HIFI-TURNTABLE



FULLY AUTOMATIC HI-FI RECORD PLAYER

The CS 429, a fully automatic turntable for ultimate convenience. The tonearm moves autonomously at the touch of a button - simply place the record on the turntable and press the start button.

The adjustable tonearm allows the use of different cartridges with individual settings for tracking force and antiskating.

Vibration dampers in the housing decouple the tonearm and platter from external vibrations. Thanks to a precise optical speed control, the CS 429 also impresses in terms of sound. Experience perfect music enjoyment with Dual.

**ROBUST, PRECISE, RELIABLE: THE PERFECT FEATURES
FOR YOUR RECORD PLAYER**

THE NEW DUAL CS-SERIES

DEVELOPED IN OUR OWN
DESIGN CENTRE IN GERMANY

PRECISION

From clockwork to turntable

QUALITY

5 year warranty

TRADITION

Building turntables for generations



< ALFRED LANGER
ABOUT THE NEW
DUAL CS-SERIES

INTERCHANGEABLE HEADSHELL

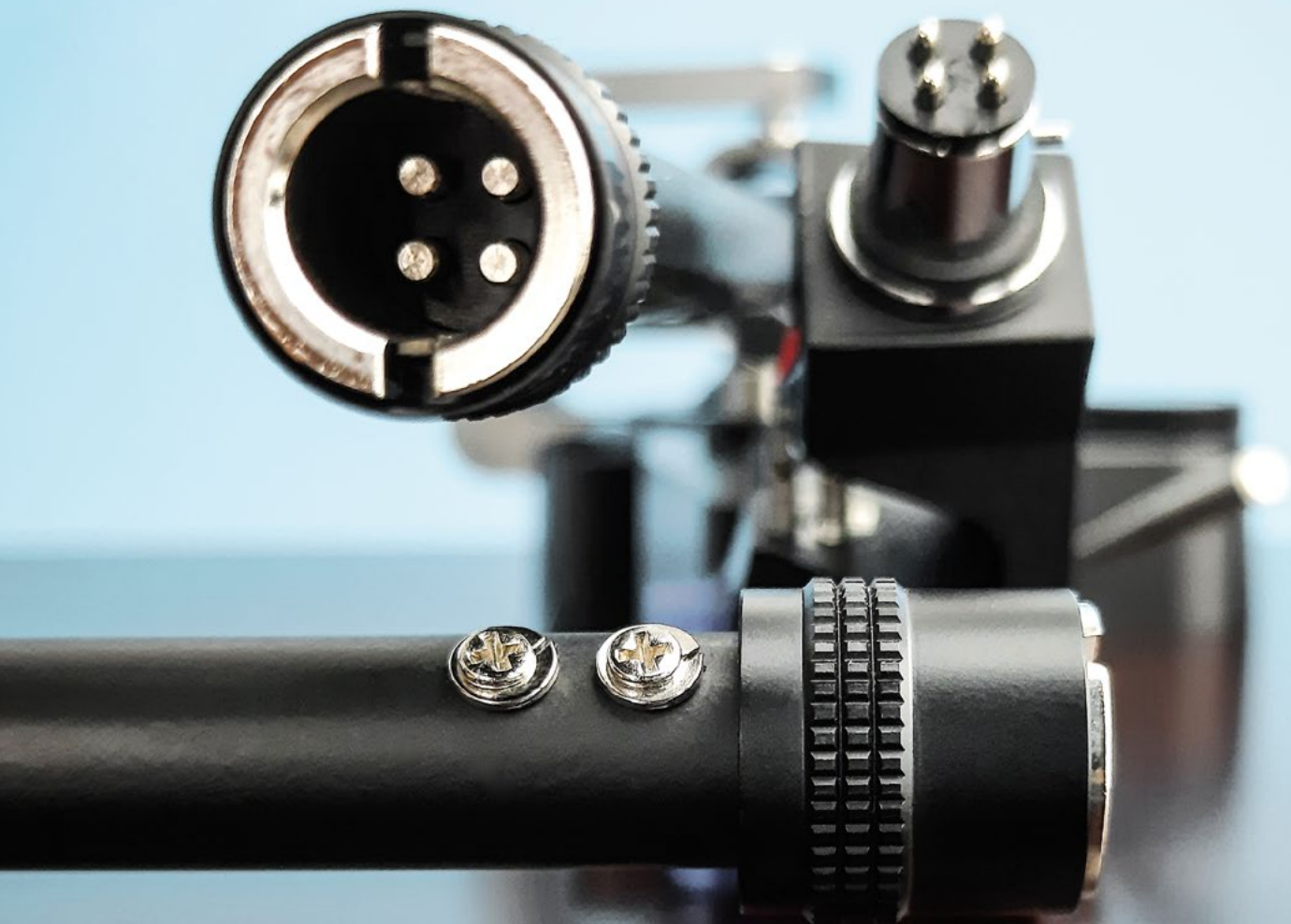
DUAL TECHNOLOGY

Quick and easy

Thanks to the screw mechanism for the headshell and simple adjustment options for tracking force and anti-skating, changing the headshell takes less than a minute.

Always correctly adjusted

Our turntables make it easy to change cartridges without having to readjust them. Your cartridge is mounted and adjusted correctly once so that subsequent changes can be carried out effortlessly. Discover the efficiency and precision of our turntables, which meet the highest standards of user-friendliness.



SPRING LOADED ANTISKATING

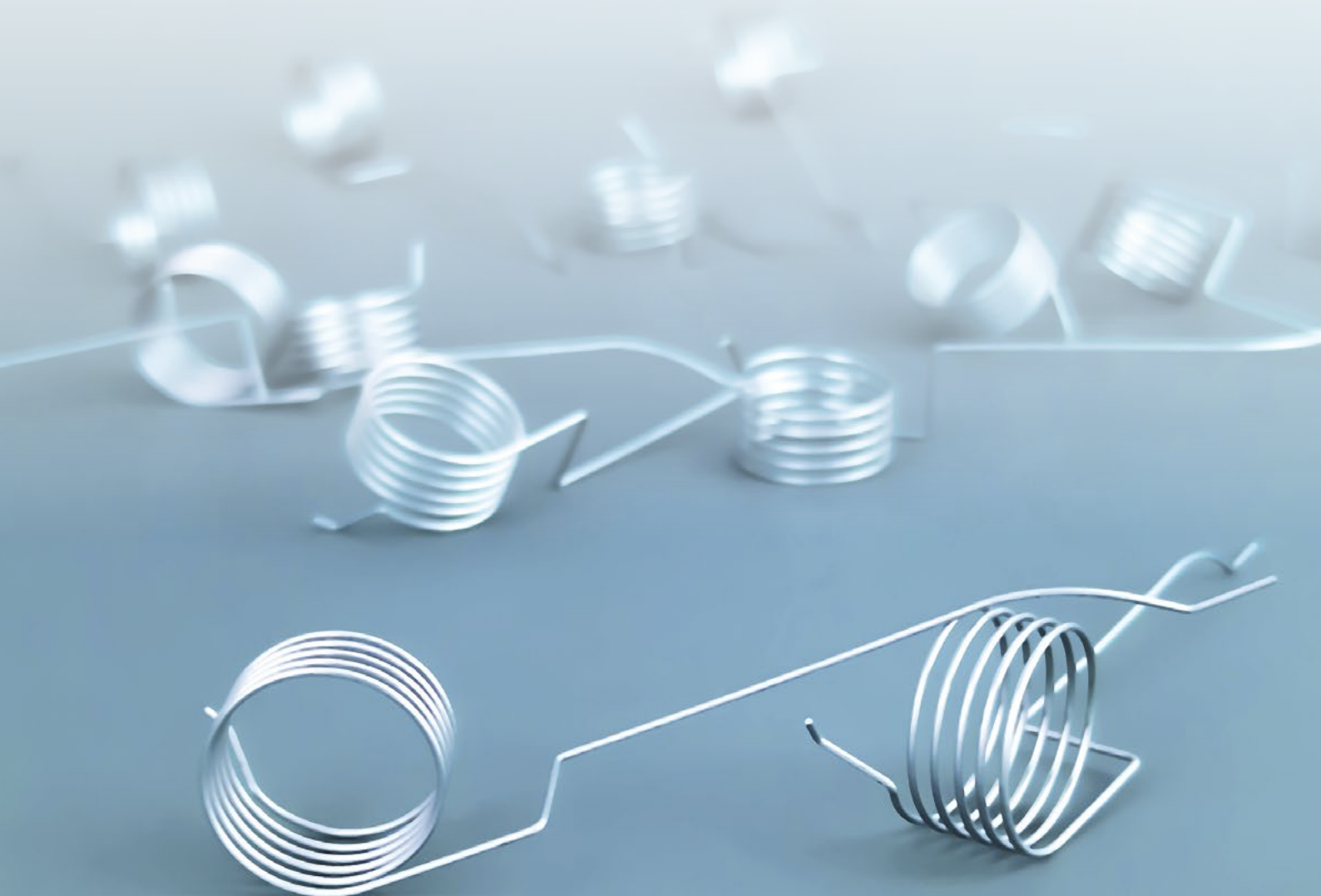
DUAL TECHNOLOGY

Stepless adjustment for fine tuning

Dual turntables offer stepless adjustment using a rotary knob, without predetermined increments. The easy-to-read scale serves as a guideline for quick and easy adjustment of the antiskating.

Precise skating correction

An ingenious mechanism with a specially shaped spring ensures precise skating compensation over the entire playback range. Experience precise adjustment for optimum sound quality with this system.



AUTOMATIC

DUAL TECHNOLOGY

Maximum ease of use

Playback can be started and stopped easily and conveniently at the touch of a button.

Without compromise

During playback, the mechanics of the automatic system are decoupled from the tonearm and the platter.



PLINTH: SOLID MDF

- Subchassis construction with rubber dampers
- Elastomer vibration absorber inside the feet
- Removable dust cover



PLATTER: ALUMINIUM DIE-CAST

- Precise aluminium die-cast
- Heavy rubber mat for resonance damping
- Hardened steel spindle in a brass bushing



TONEARM: STRAIGHT, STATICALLY BALANCED

- All functions are fully automatic or manual
- Solid aluminum construction with ball-bearings
- Accurate spring loaded antiskating



DRIVE: DC – BELT / REGULATED

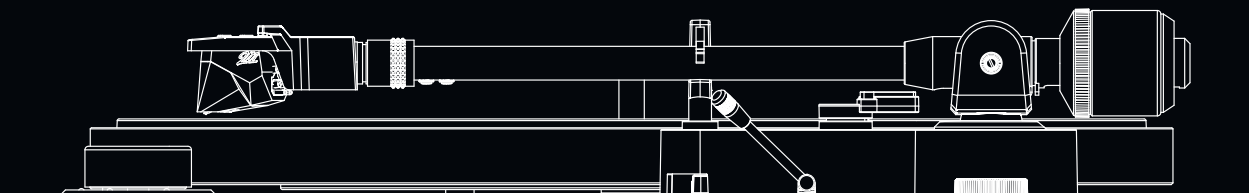
- Optical speed control at the motor
- Rubber mountings for vibration decoupling
- Precision cut belt for lower wow & flutter



DUAL TECHNICAL SPECIFICATIONS

DUAL CS 429

MOTOR		PLATTER	
Drive	Belt	Material	Aluminium die-cast
Speed settings	33/45/78	Mat	Rubber 2,5 mm
Wow & Flutter	< ±0,08 % (DIN rated)	Bearing	Hardened steel spindle Brass bushing
		Diameter	305 mm
		Weight (incl. Mat)	850 g
ONEARM		PLINTH	
Auto-Start/-Stop-Function	Automatic	Material	MDF
Bearing	Ball-bearing	Surface finish	Vinyl veneer / Black
Effective length	221,5 mm	Feet	Ø 62 mm / Elastomer
Offset angle	25,6°	Connection	RCA socket
Overhang	19 mm	Connection to phono input	✓
Type	Statically balanced	Connection to line input	✓
Stylus pressure range	0 g to 4 g	Digital Output	X
Cartridge weight range	5 g to 9 g	Dimension, closed dustcover	435 x 367 x 145 mm
Factory installed pick up	Ortofon 2M Red	Dimension, open dustcover	T: 415 mm / H: 400 mm
		Weight	6,6 kg



Dual

Dual

**5 YEAR
WARRANTY**

