



# DUAL CS 518

MANUAL HI-FI-TURNTABLE



# THE MANUAL TURNTABLE WITH THE CLASSIC DUAL TONEARM

The CS 518, ideal for vinyl enthusiasts, impresses with a precise twin gimbal tonearm and the finest pivot ball bearings. The classic dual tonearm guides even the most demanding cartridges precisely and safely for a first-class listening experience.

With the Ortofon 2M Red cartridge and switchable MM phono preamplifier, the CS 518 not only offers outstanding value for money, but also a very balanced sound.

Ease of use is guaranteed with the characteristic features of the CS series. The stepless antiskating can be easily adjusted using a rotary knob with a clear scale. The electronic adjustment of the three speeds is conveniently carried out via a rotary switch, while the appropriate pickup can be easily changed using the headshell.

**THE PERFECT START TO THE HIGH-END**

# THE NEW DUAL CS-SERIES

DEVELOPED IN OUR OWN  
DESIGN CENTRE IN GERMANY

## PRECISION

From clockwork to turntable

## QUALITY

5 year warranty

## TRADITION

Building turntables for generations



< ALFRED LANGER  
ABOUT THE NEW  
DUAL CS-SERIES



# INTERCHANGEABLE HEADSHELL

DUAL TECHNOLOGY

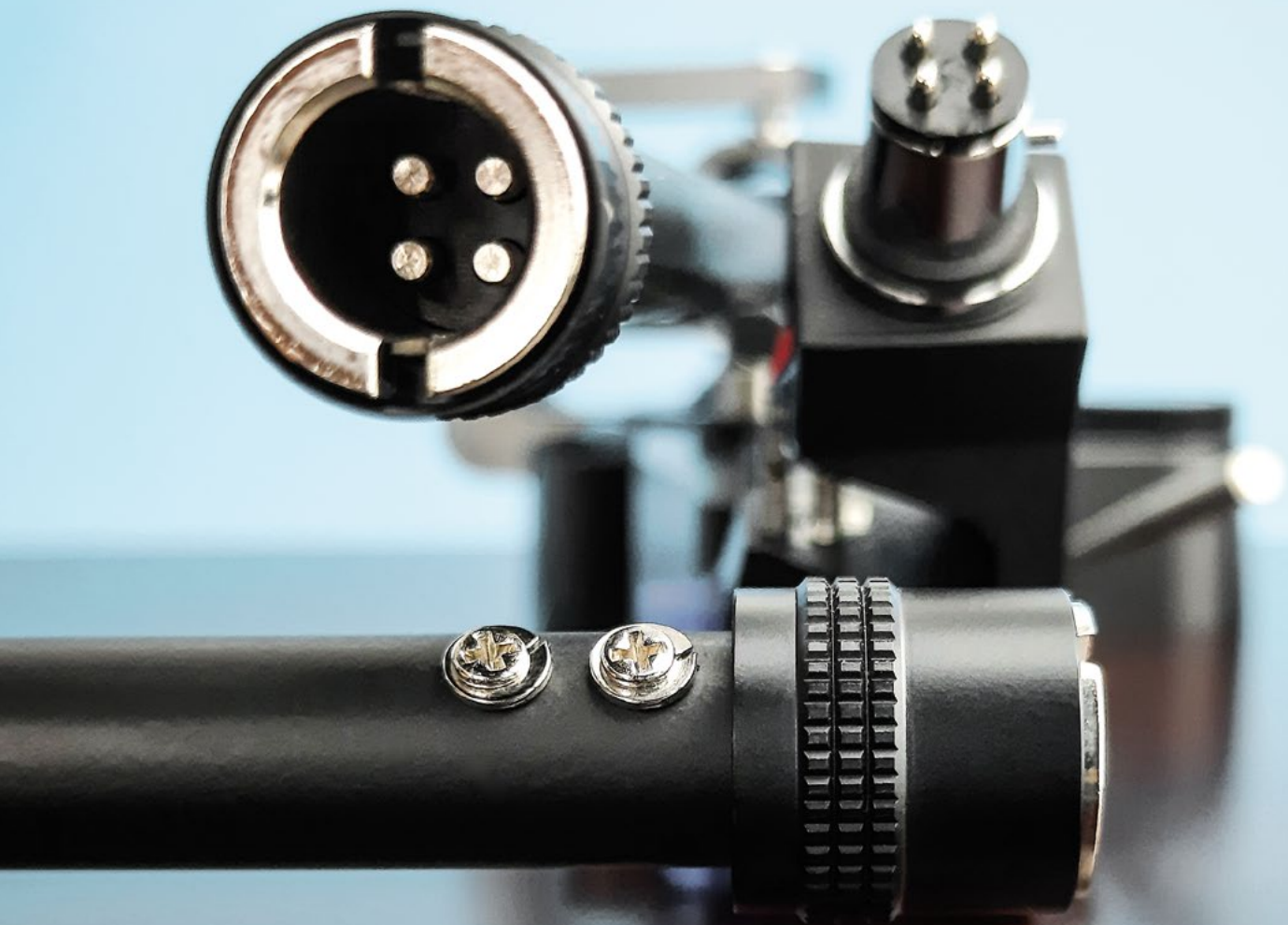
---

## **Quick and easy**

Thanks to the screw mechanism for the headshell and simple adjustment options for tracking force and anti-skating, changing the headshell takes less than a minute.

## **Always correctly adjusted**

Our turntables make it easy to change cartridges without having to readjust them. Your cartridge is mounted and adjusted correctly once so that subsequent changes can be carried out effortlessly. Discover the efficiency and precision of our turntables, which meet the highest standards of user-friendliness.



# SPRING LOADED ANTISKATING

DUAL TECHNOLOGY

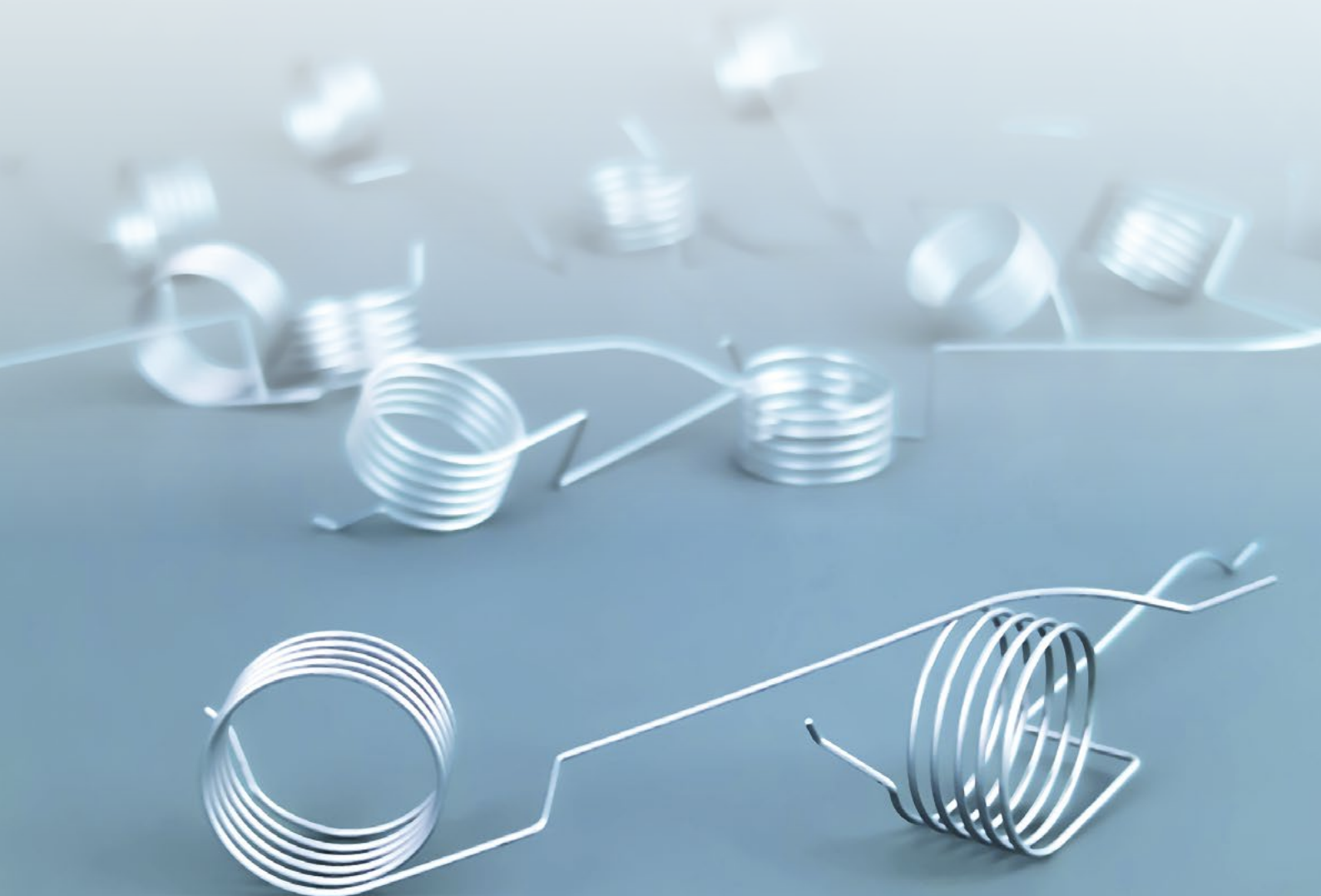
---

## **Stepless adjustment for fine tuning**

Dual turntables offer stepless adjustment using a rotary knob, without predetermined increments. The easy-to-read scale serves as a guideline for quick and easy adjustment of the antiskating.

## **Precise skating correction**

An ingenious mechanism with a specially shaped spring ensures precise skating compensation over the entire playback range. Experience precise adjustment for optimum sound quality with this system.



# THE CLASSIC DUAL TONEARM

## DUAL TECHNOLOGY

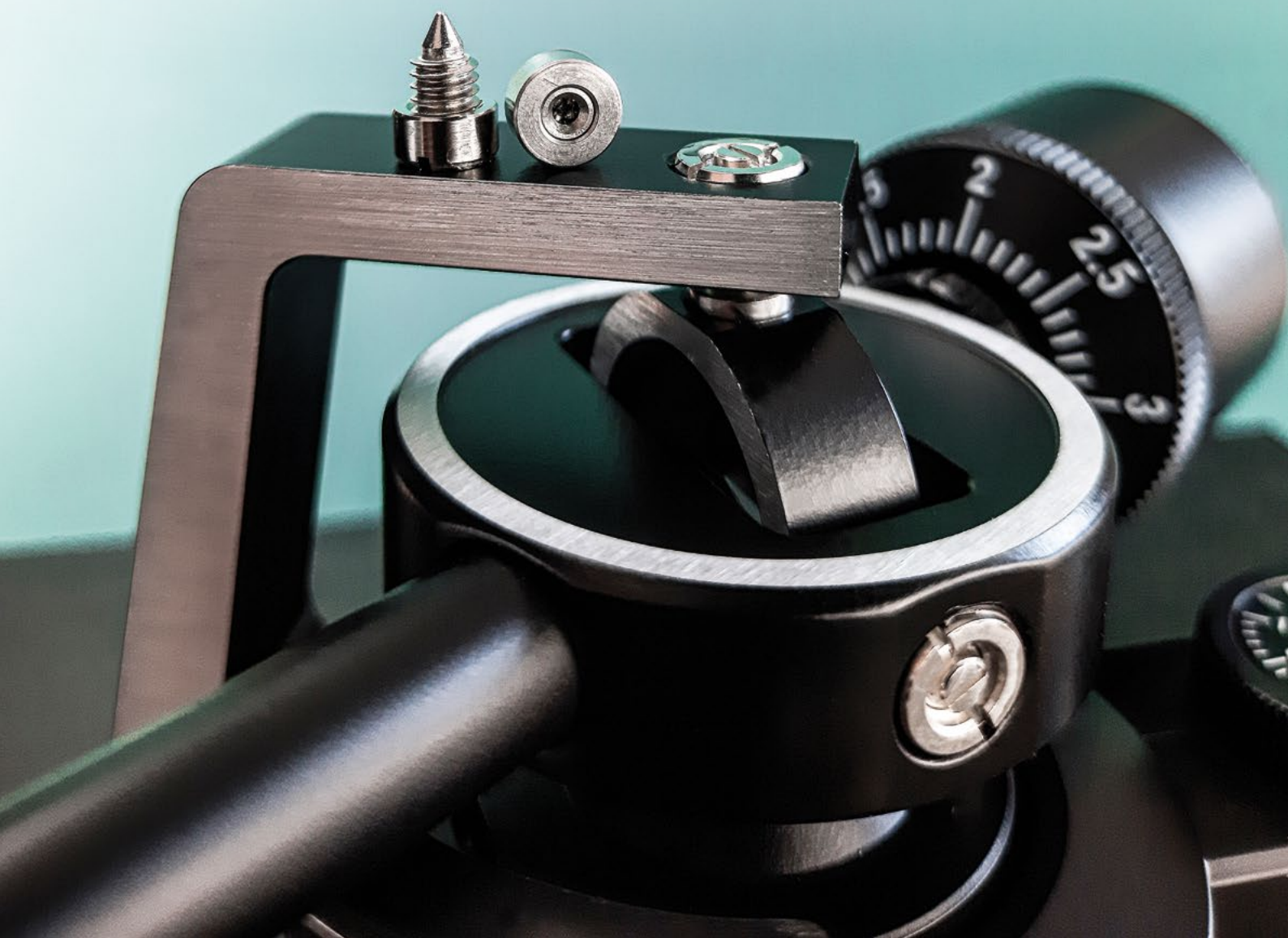
---

### High-precision twin gimbal tonearm bearing

The classic Dual tonearms are characterised by a twin gimbal bearing. The arrangement of the bearing points around the tonearm tube reduces tilting moments to an absolute minimum.

### Precision pivot ball bearings for the highest demands

The bearing is based on precision pivot ball bearings in combination with a precise machined tip in the rotation shaft. This design ensures virtually movement-free operation and minimises friction. Experience outstanding sound precision and stability thanks to our innovative technology.





# PLINTH: SOLID MDF

---

- MDF construction with a black vinyl veneer
- Elastomer vibration absorber inside the feet
- Surface option: Walnut wood veneer



# PLATTER: ALUMINIUM DIE-CAST

---

- Aluminium die-cast, long term precision
- Heavy rubber mat for resonance damping
- Hardened steel spindle in a brass bushing





# TONEARM: TWIN GIMBAL

---

- Accurate spring loaded antiskating
- Solid aluminium gimbal construction
- Four fine pivot ball-bearings



# DRIVE: DC- MOTOR / BELT

---

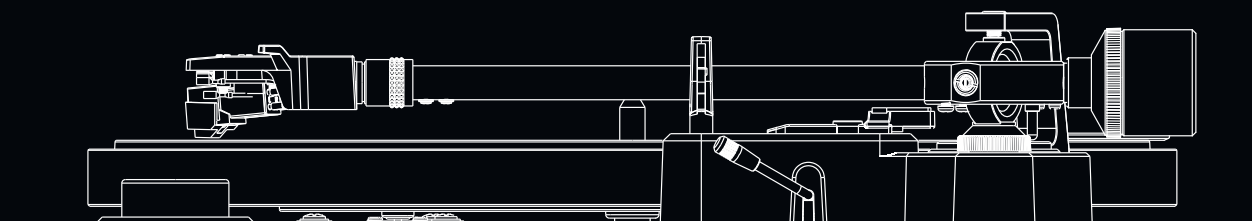
- Selector switch for 33 / 45 / 78
- Rubber mountings for vibration decoupling
- Precision cut belt for lower wow & flutter



# DUAL TECHNICAL SPECIFICATIONS

## DUAL CS 518

MOTOR		PLATTER	
Drive	Belt	Material	Aluminium die-cast
Speed settings	33/45/78	Mat	Rubber 2,5 mm
Wow & Flutter	< ±0,1 % (DIN rated)	Bearing	Hardened steel spindle Brass bushing
		Diameter	305 mm
		Weight (incl. Mat)	850 g
ONEARM		PLINTH	
Auto-Start/-Stop-Function	X	Material	MDF
Bearing	4 x Pivot ball-bearing / twin gimbal mounting	Surface finish	Vinyl veneer / Black Option: veneer Wallnut
Effective length	221,5 mm	Feet	Ø 62 mm / Elastomer
Offset angle	25,6°	Connection	RCA socket
Overhang	19 mm	Connection to phono input	✓
Type	Statically balanced	Connection to line input	✓
Stylus pressure range	0 g to 4 g	Digital Output	X
Cartridge weight range	5 g to 9 g	Dimension, closed dustcover	435 x 367 x 145 mm
Factory installed pick up	Ortofon 2M Red	Dimension, open dustcover	T: 415 mm / H: 400 mm
		Weight	5,8 kg



# Dual

Dual

**5 YEAR  
WARRANTY**

