



# DUAL CS 618

MANUAL HIFI-TURNTABLE



# TRADITIONAL MANUAL TURNTABLE WITH DIRECT DRIVE

Dual direct drive concepts have been synonymous with outstanding durability and quality for decades. The CS 618 impresses with a quiet direct drive that keeps the platter speed precise and silent.

The turntable's twin gimbal precision tonearm is further optimised by the Ortofon 2M Blue to deliver outstanding sound quality. Discover an even more precise and improved audio reproduction for a first-class listening experience.

With an electronic motor stop and automatic lift at the end of the record, the CS 618Q offers the highest level of operating comfort for a manual turntable. In addition, there are the other comfort elements of the CS series. The stepless antiskating can be easily adjusted using a rotary knob with a clear scale. The electronic adjustment of the three speeds is conveniently carried out via a rotary switch, while the appropriate pickup can be easily changed using the headshell.

**HIGH-END TURNTABLE WITH AUTOMATIC LIFT  
AND STOP FUNCTION**

# THE NEW DUAL CS-SERIES

DEVELOPED IN OUR OWN  
DESIGN CENTRE IN GERMANY

## PRECISION

From clockwork to turntable

## QUALITY

5 year warranty

## TRADITION

Building turntables for generations



< ALFRED LANGER  
ABOUT THE NEW  
DUAL CS-SERIES

# INTERCHANGEABLE HEADSHELL

DUAL TECHNOLOGY

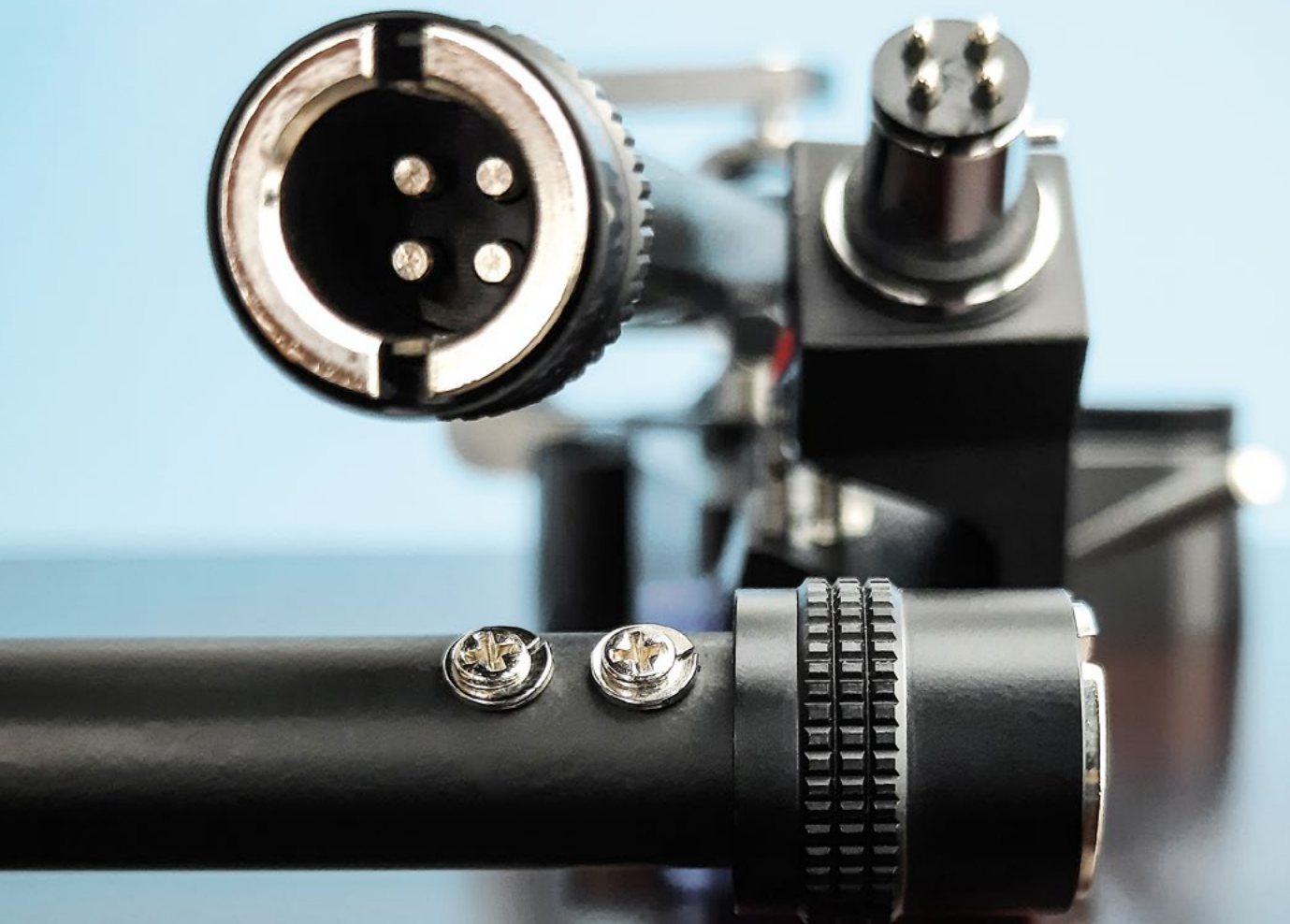
---

## **Quick and easy**

Thanks to the screw mechanism for the headshell and simple adjustment options for tracking force and anti-skating, changing the headshell takes less than a minute.

## **Always correctly adjusted**

Our turntables make it easy to change cartridges without having to readjust them. Your cartridge is mounted and adjusted correctly once so that subsequent changes can be carried out effortlessly. Discover the efficiency and precision of our turntables, which meet the highest standards of user-friendliness.



# SPRING LOADED ANTISKATING

DUAL TECHNOLOGY

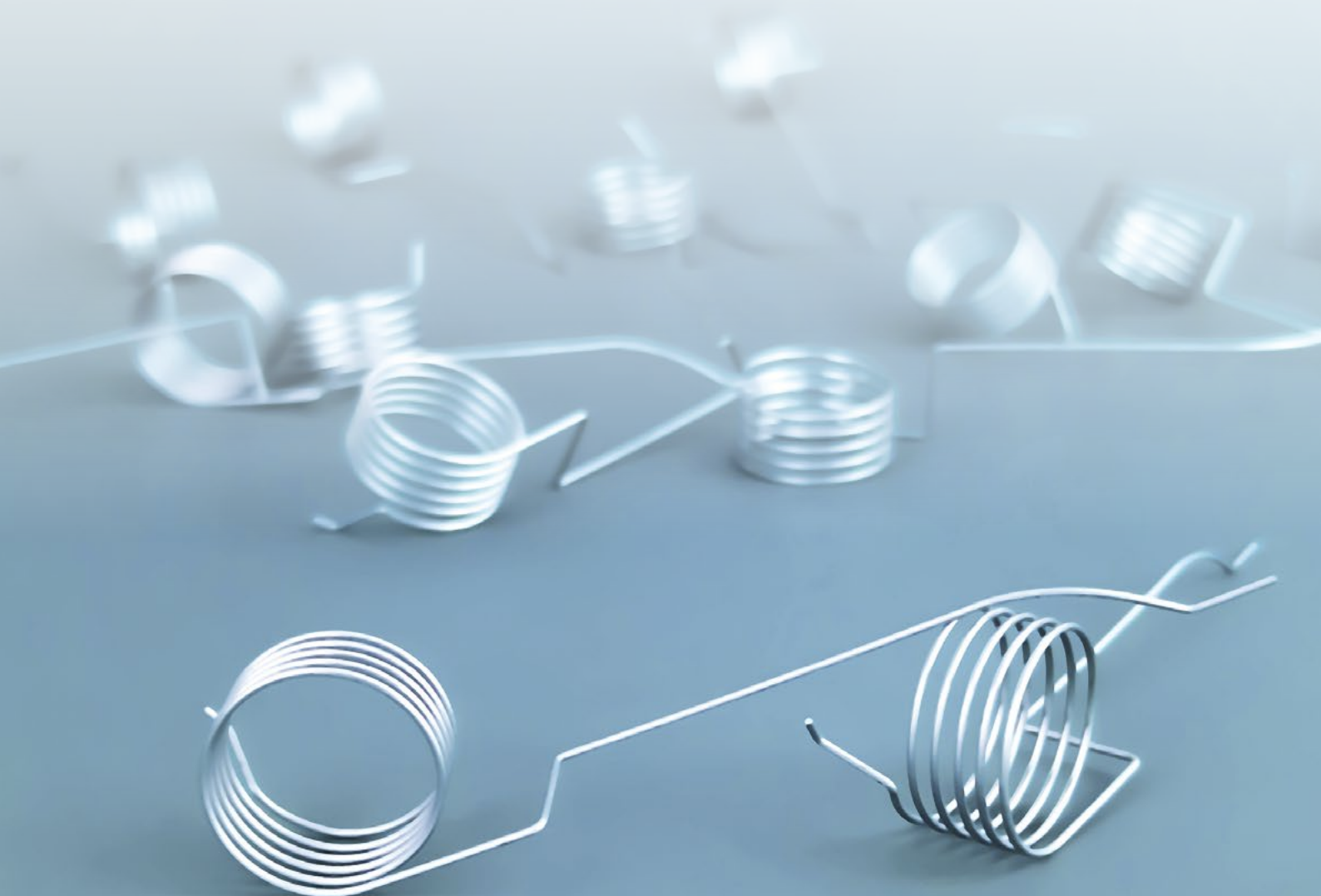
---

## **Stepless adjustment for fine tuning**

Dual turntables offer stepless adjustment using a rotary knob, without predetermined increments. The easy-to-read scale serves as a guideline for quick and easy adjustment of the antiskating.

## **Precise skating correction**

An ingenious mechanism with a specially shaped spring ensures precise skating compensation over the entire playback range. Experience precise adjustment for optimum sound quality with this system.



# THE CLASSIC DUAL TONEARM

## DUAL TECHNOLOGY

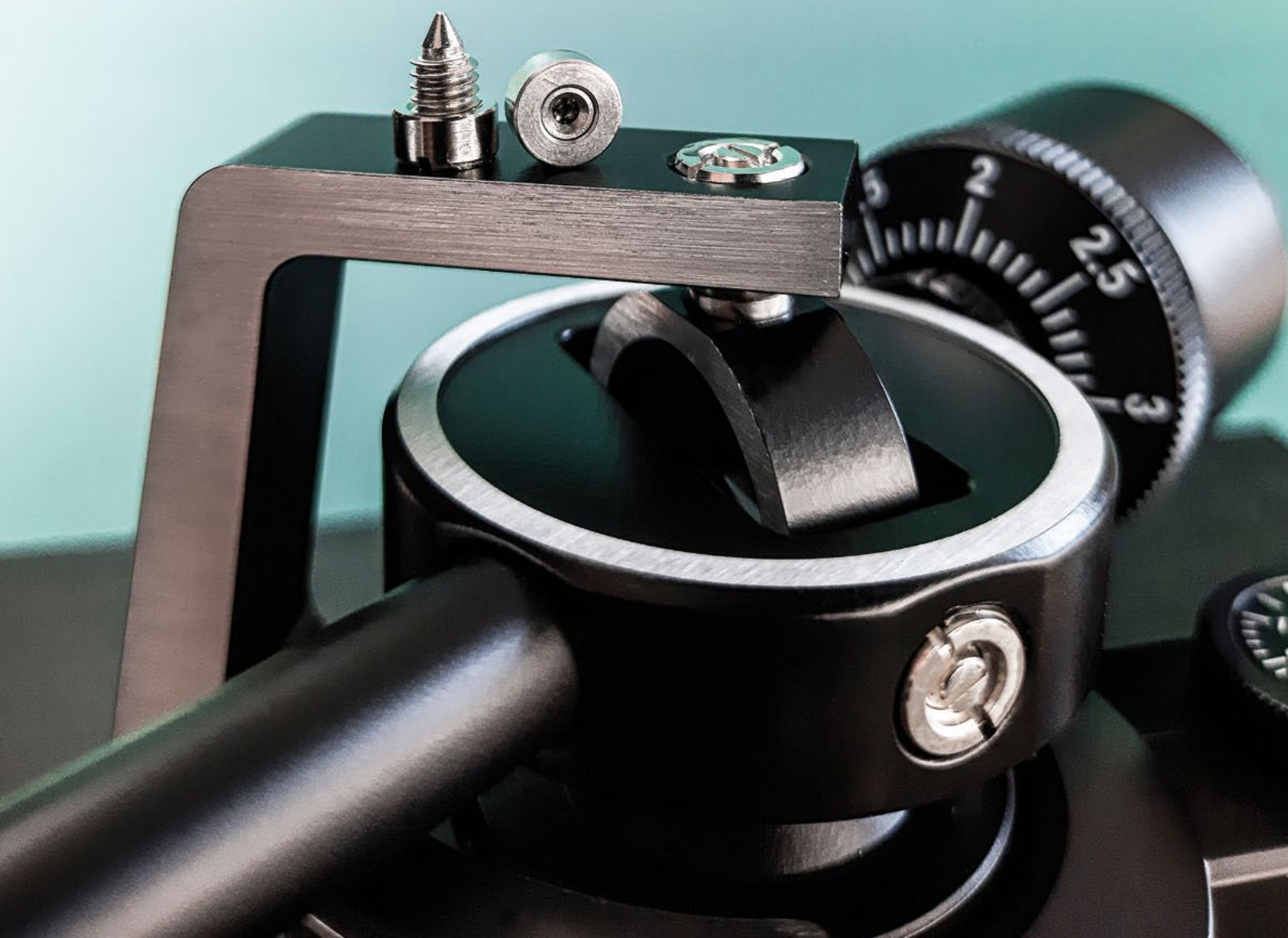
---

### High-precision twin gimbal tonearm bearing

The classic Dual tonearms are characterised by a twin gimbal bearing. The arrangement of the bearing points around the tonearm tube reduces tilting moments to an absolute minimum.

### Precision pivot ball bearings for the highest demands

The bearing is based on precision pivot ball bearings in combination with a precise machined tip in the rotation shaft. This design ensures virtually movement-free operation and minimises friction. Experience outstanding sound precision and stability thanks to our innovative technology.



# PLINTH: SOLID MDF

---

- Options: Black vinyl, gloss paint, walnut veneer
- Switchable auto-stop function
- Elastomer vibration absorber inside the feet



# PLATTER: ALUMINIUM DIE-CAST

---

- Heavy and precise aluminium die-cast platter
- Hardened steel spindle integrated in the direct-drive
- Heavy rubber mat for resonance damping





# TONEARM: TWIN GIMBAL

---

- Switchable automatic tonearm lift function
- Solid aluminium gimbal construction
- Four fine pivot ball-bearings



# DRIVE: DIRECT-DRIVE

---

- Quartz stabilised for 33 / 45 / 78
- No vibrations through coreless inductors
- Double shielded to eliminate magnetic fields



# DUAL TECHNICAL SPECIFICATIONS

## DUAL CS 618

### MOTOR

Drive

Speed settings

Wow & Flutter

Direct drive

33/45/78

< ±0,07 % (DIN rated)

### ONEARM

Auto-Start/-Stop-Function

Bearing

Effective length

Offset angle

Overhang

Type

Stylus pressure range

Cartridge weight range

Factory installed pick up

Auto-Stop / Auto Tonarmlift

4 x Pivot ball-bearing /  
twin gimbal mounting

221,5 mm

25,6°

19 mm

Statically balanced

0 g to 4 g

5 g to 9 g

Ortofon 2M Blue

### PLATTER

Material

Mat

Bearing

Diameter

Weight (incl. Mat)

### PLINTH

Material

Surface finish

Feet

Connection

Connection to phono input

Connection to line input

Digital Output

Dimension, closed dustcover

Dimension, open dustcover

Weight

Aluminium die-cast

Rubber 2,5 mm

Hardened steel spindle  
Brass bushing

305 mm

1450 g

MDF

Vinyl veneer / Black  
Option: Gloss / Black  
Option: Veneer Wallnut

Ø 62 mm / Elastomer

RCA socket

✓

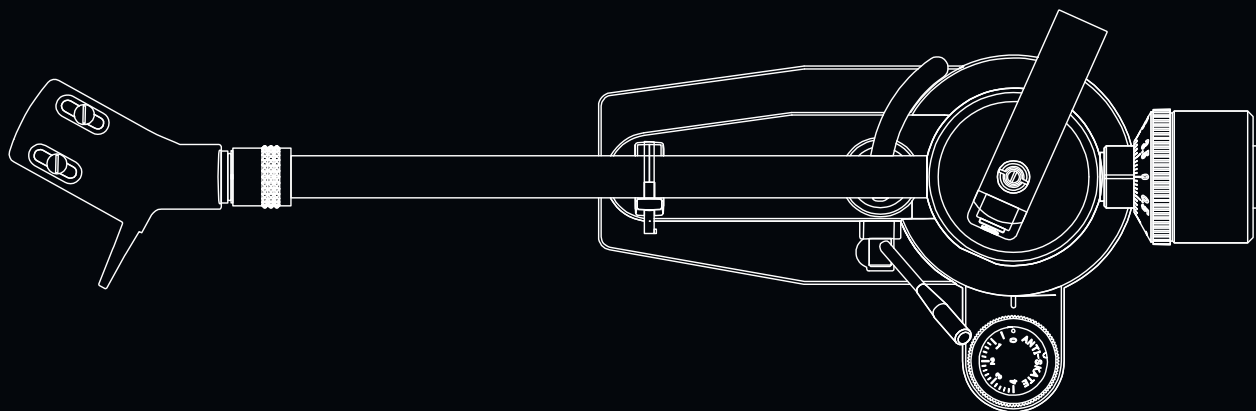
✓

X

435 x 367 x 145 mm

T: 415 mm / H: 400 mm

7,5 kg



# Dual

Dual

**5 YEAR  
WARRANTY**

