

Dual

WWW.DUAL.DE

DUAL PRIMUS MAXIMUS

MANUAL REFERENCE-TURNTABLE





DUAL PRIMUS MAXIMUS

MANUAL REFERENCE-TURNTABLE

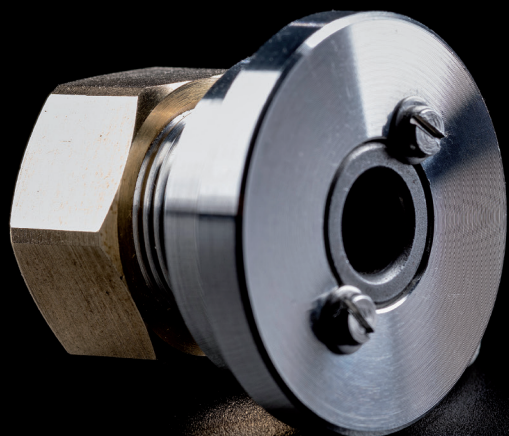
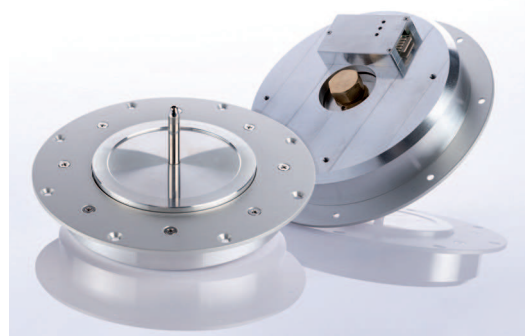
The Primus Maximus is a special, limited edition reference model of which, only 100 units will be handmade to order in Germany.

This flagship model is a showpiece for the best technologies used throughout the history of the Dual company, refining them and carrying them forward into the 21st century.

These key Dual features include:

The twin gimbal tonearm, spring loaded tracking force and direct-drive

The overall result is an understated, high-tech turntable, providing a superb musical experience.



- ▲▲ Precision high-tech direct-drive made in Germany.
- ▲ The tracking force is adjusted with a torsion brass spring.
- ◀ Handmade in Germany.

DETAILS:



Plinth: Aluminium / Solid MDF

Each unique unit is created individually and the plinth is finished with real wood veneers. The critical components, such as motor, platter and arm are fixed to a 10mm thick aluminium base plate. The heavy top and base plates are connected to minimise vibration.



Platter: Solid Aluminium

The heavy platter, weighing 2.7kg, is machined from a solid block of aluminium and refined with a blasted and eloxated surface finish. The platter weight is exactly matched to the motor regulation in order to reduce wow and flutter to an absolute minimum.



Tonearm: Twin Gimbal design / Spring loaded tracking force

The tonearm base and both gimbal elements are machined from solid aluminium. Precision pivot ball-bearings are used in conjunction with hardened steel spikes to ensure tightest tolerances within the tonearm assembly over a long lifetime. The tracking force is independent of gravity and adjusted with a torsion spring.



Motor: Direct-drive

The drive unit is engineered and made in Germany. Its regulation is specifically designed for high-end audio application, placing emphasis on stability, with no quick start up times nor high torque. These features are only important for DJ applications and not appropriate in such a high quality system.



TECHNICAL DATA – DUAL PRIMUS MAXIMUS

Drive:

Drive:	Direct drive, Reference
Speed settings:	33/45/78
Wow & Flutter:	< ±0,04 % (DIN WTD)

Platter:

Material:	Solid Aluminum
Mat:	Rubber 4,5 mm
Bearing:	Hardened steel spindle, sintered metallhousing
Diameter:	304 mm
Weight (incl. Mat):	2800 g

Tonearm:

Auto-Start/-Stop-Function:	X
Bearing:	4 x Pivot ball-bearing, twin gimbal mounting
Effective length:	221 mm
Offset Angle:	24°
Overhang:	18,5 mm
Type:	dynamically balanced, with damping
Stylus Pressure Range:	0 g to 3 g
Cartridge Weight Range:	5 g to 12 g
Factory installed pick up:	Ortofon Quintet Bronze

Plinth:

Material:	Solid MDF machined, solid Alu baseplate
Surface finish:	Individual wood veneers, personally selected
Feet:	Ø 60 mm / Elastomer, Height adjustable
Connection:	5 pin Tonearmconnector on RCA cable
Connection to Phono Input:	Yes
Connection to Line Input:	X
Digital Output:	X
Dimension, closed dustcover:	450 x 370 x 155 mm
Dimension, open dustcover:	T: 418 mm / H: 405 mm
Weight:	15 kg



WWW.DUAL.DE



Dual