

Service-Anleitung  
Service Manual  
Instructions de Service

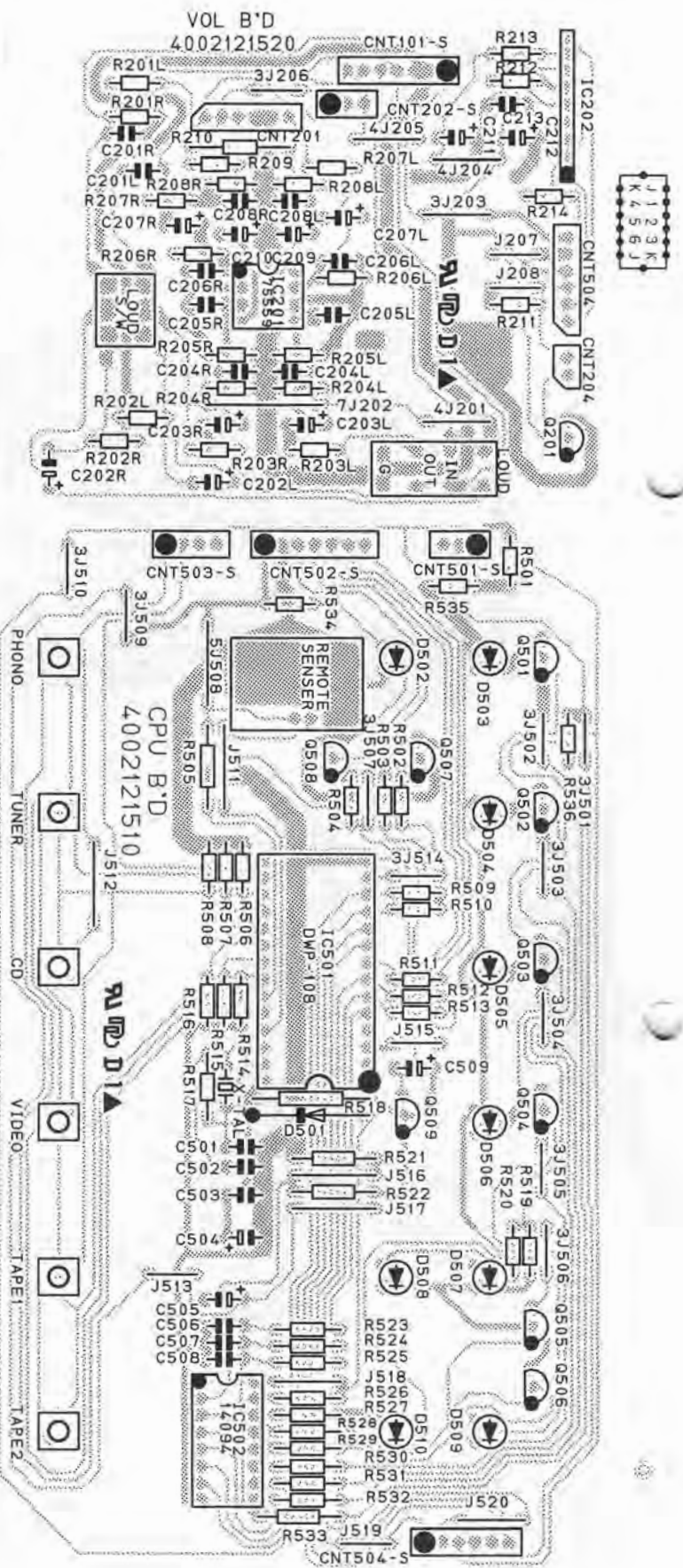
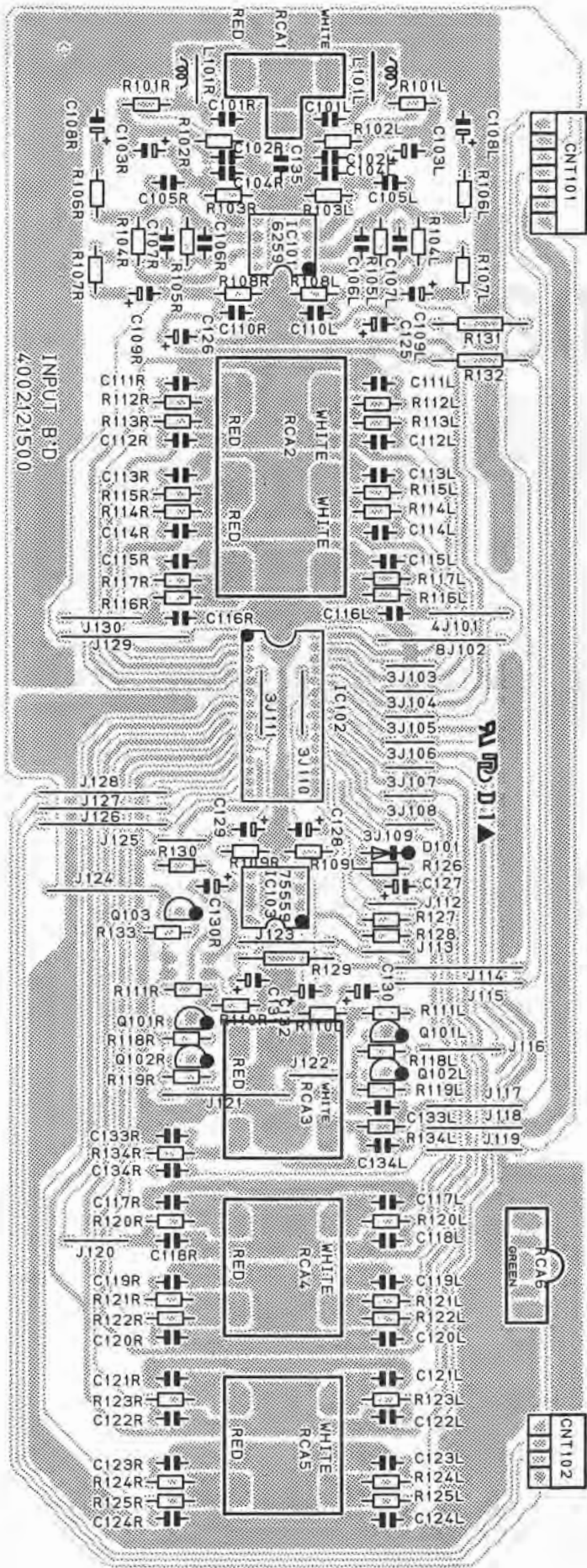
## CV 600 RC

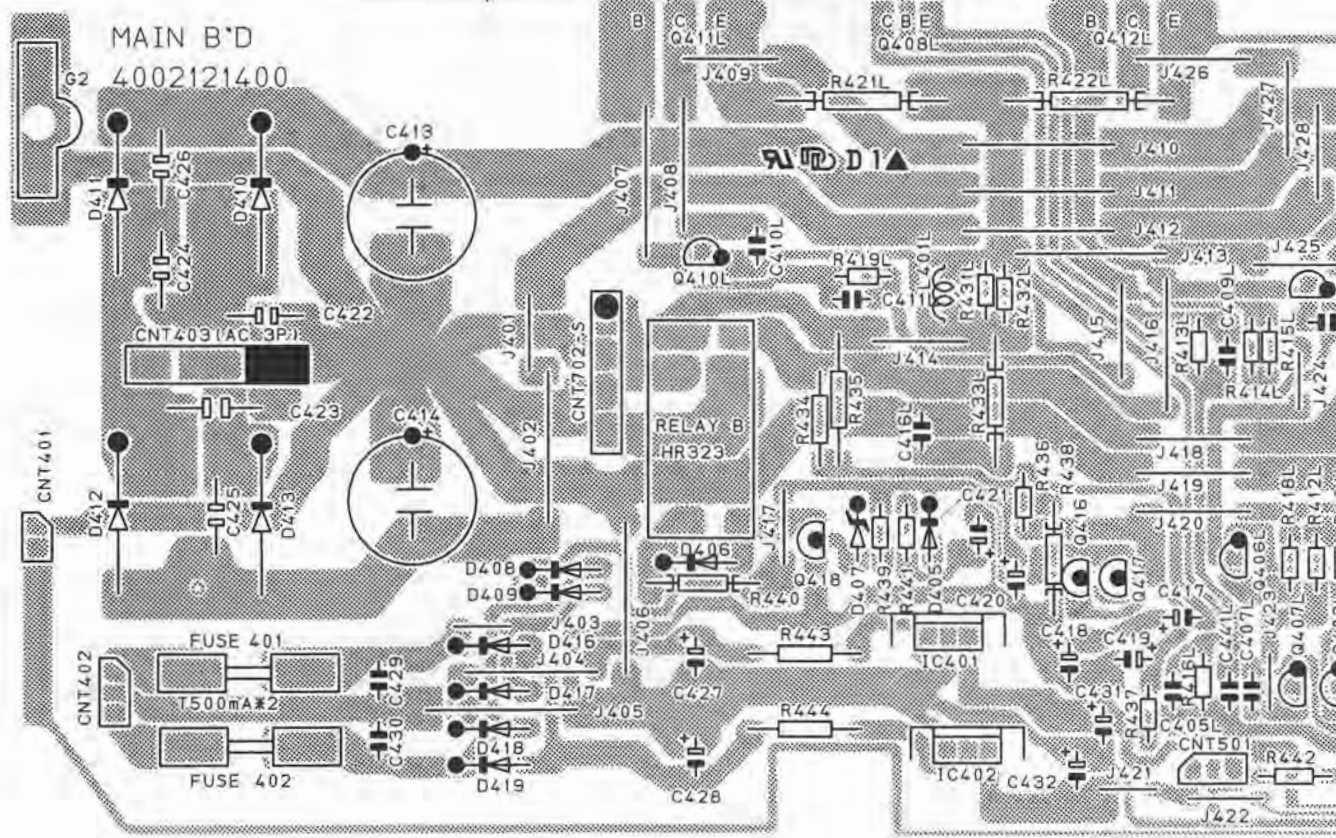
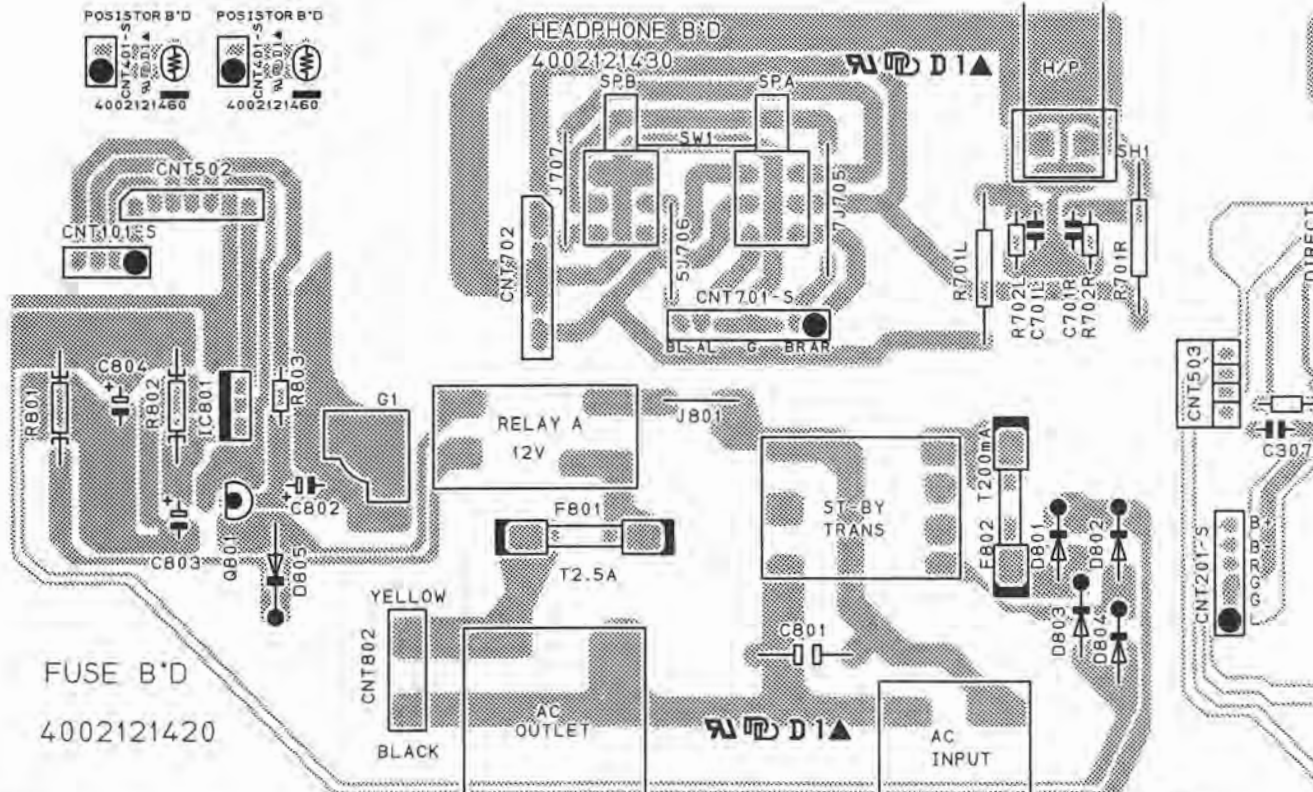
029028

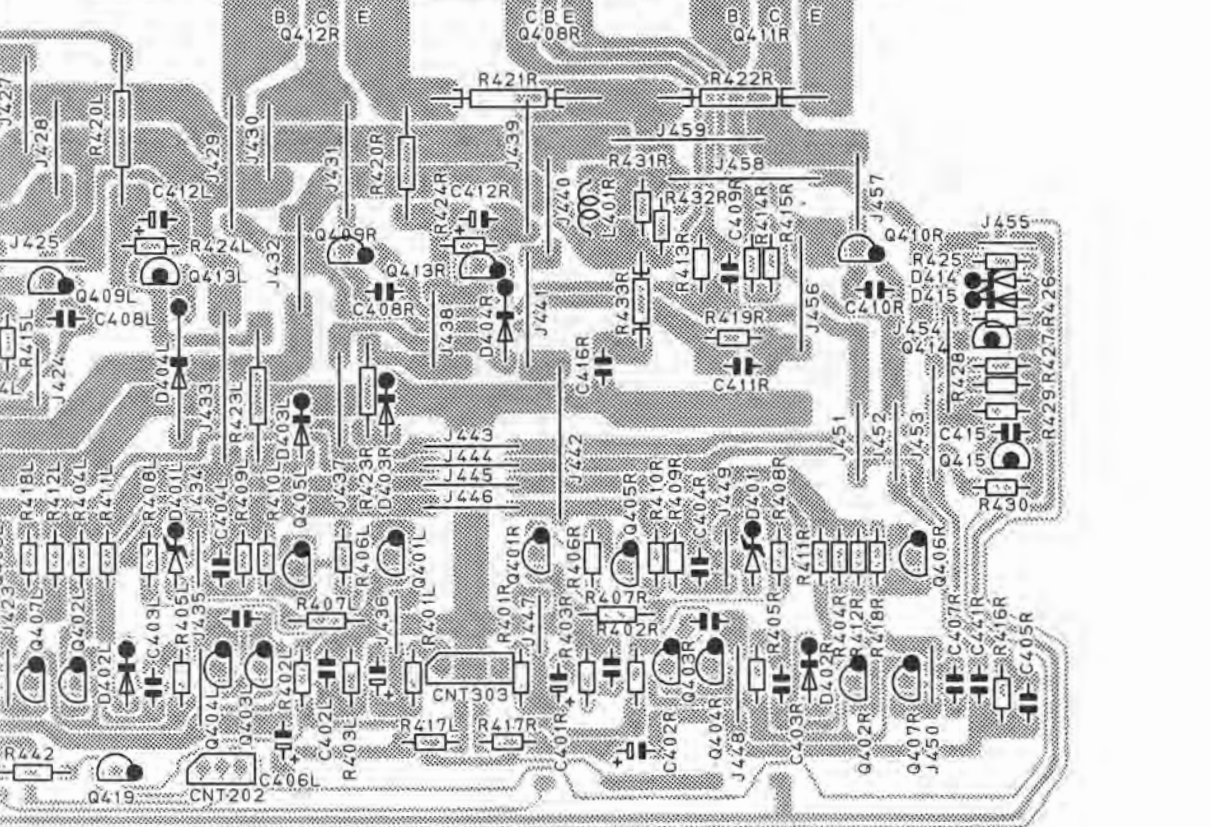
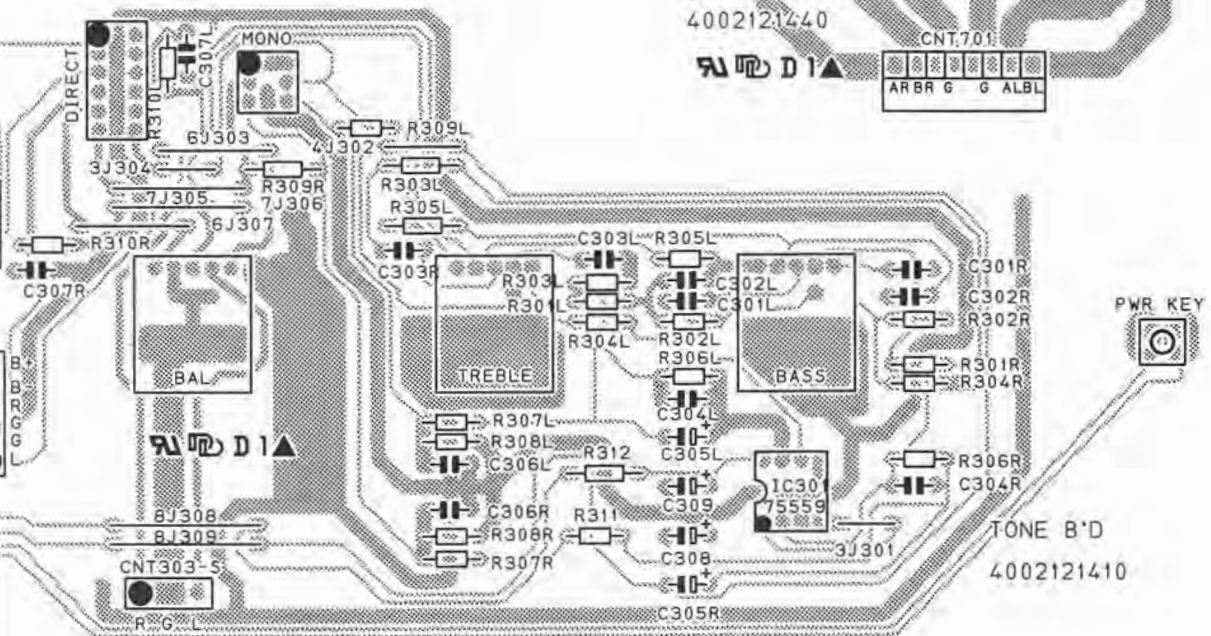
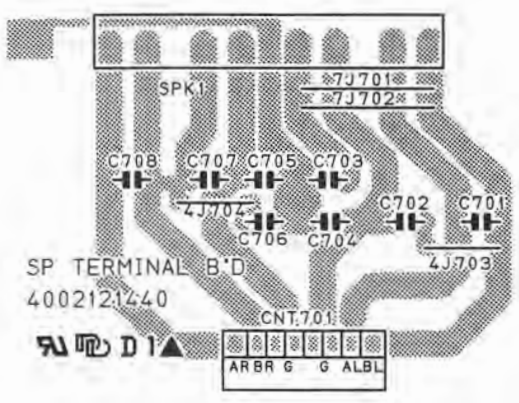
Download from www.dual.de  
Not for commercial use

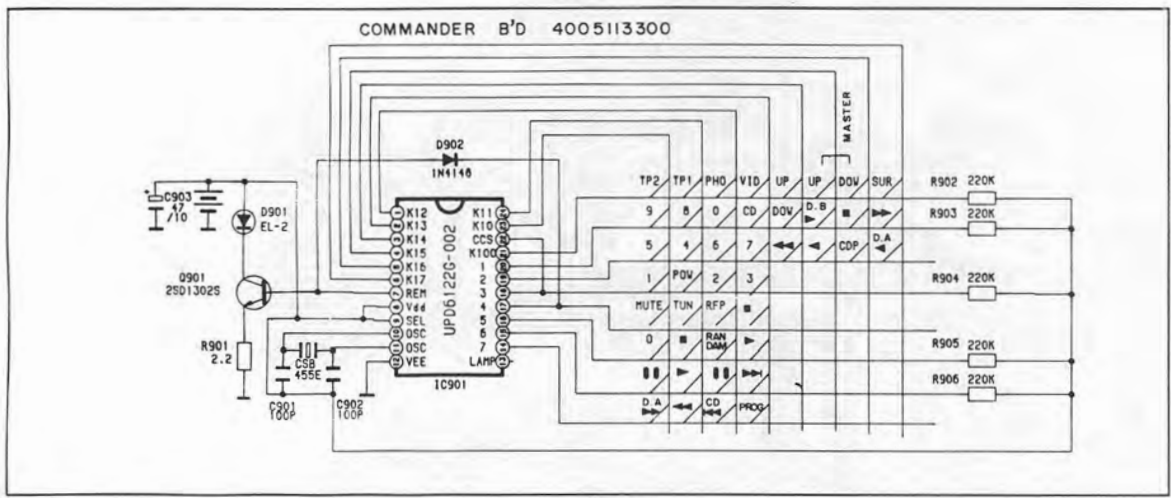
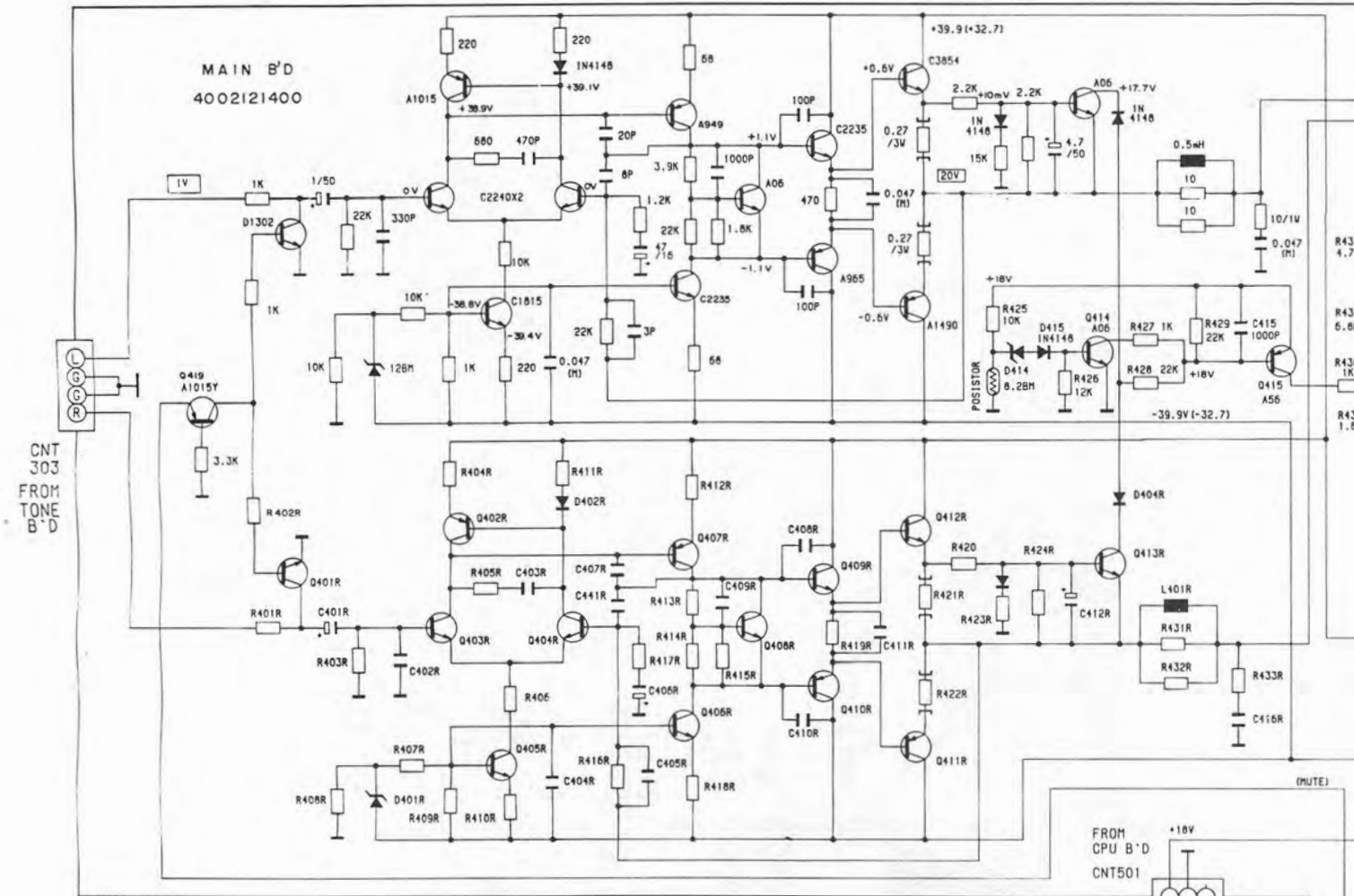


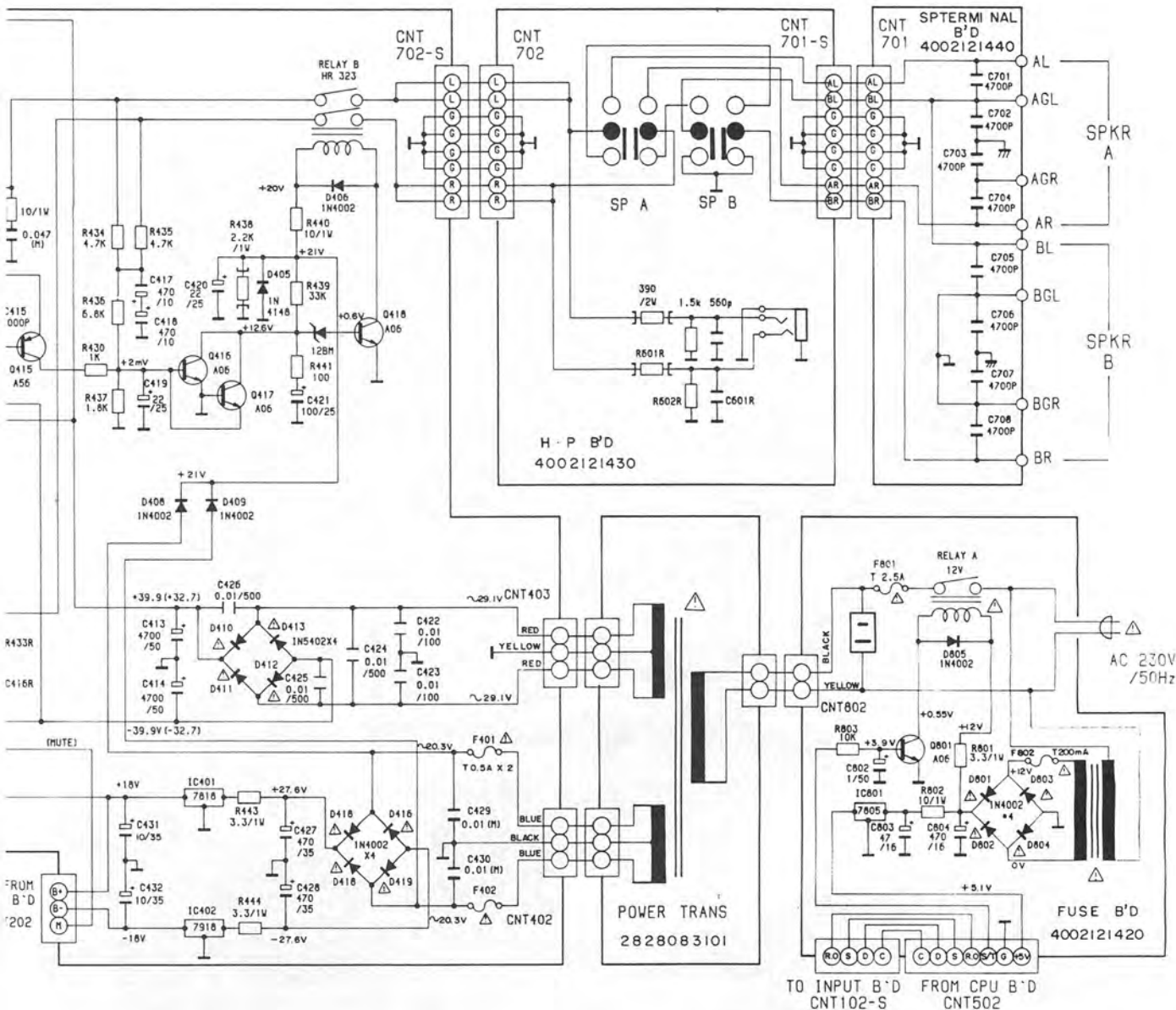
Technische Daten (typische Werte)	Specifications (typical values)	Caractéristiques techniques (valeurs types)	Dati tecnici (valori tipici)	CV 600 RC
<b>Ausgangsleistung</b> Sinusleistung (8 Ω DIN 1 kHz) Musikleistung (8/4 Ω 1 kHz)	<b>Power output</b> RMS continuous power output (8 Ω DIN 1 kHz) music power (8/4 Ω 1 kHz)	<b>Puissance de sortie</b> Puissance sinus (8 ohms DIN 1 kHz) Puissance musique (8/4 ohms 1 kHz)	<b>Potenza d'uscita</b> capacità sinusoidale (8 ohm DIN 1 kHz) Potenza musicale (8/4 ohm 1 kHz)	2 × 50 W 2 × 70 W
<b>Leistungsbandbreite</b>	<b>Frequency response</b>	<b>Bande de puissance</b>	<b>Banda di potenza</b>	
<b>Klirrfaktor</b> bei 2/3 Leistung (1 kHz)	<b>Harmonic distortion</b> at 2/3 power (1 kHz)	<b>Distorsion</b> à 2/3 de puissance (1 kHz)	<b>Distorsione armonica</b> a 2/3 de rendimento (1 kHz)	< 0,01 %
<b>Fremdspannungsabstand</b> bezogen auf Nennleistung Phono-Eingang Hochpegel-Eingänge (CD, VIDEO, TAPE, TUNER)	<b>Signal/noise ratio</b> referred to rated power output Phono input High-level inputs (CD, VIDEO, TAPE, TUNER)	<b>Rapport non pondéré son/bruit</b> par rapport à la puissance nominale Entrée Phono Entrées haut niveau (CD, VIDEO, TAPE, TUNER)	<b>Selettività</b> riferita alla potenza nominale ingresso phono ingressi ad alte impedenze (CD, VIDEO, TAPE, TUNER)	70 dB 90 dB
<b>Übersprechdämpfung</b>	<b>Crosstalk attenuation</b>	<b>Diaphonie</b>	<b>Diafonia</b>	80 dB
<b>Eingänge</b> CD, VIDEO, TAPE, TUNER PHONO	<b>Inputs</b> CD, VIDEO, TAPE, TUNER PHONO	<b>Entrées</b> CD, VIDEO, TAPE, TUNER PHONO	<b>Ingressi</b> CD, VIDEO, TAPE, TUNER PHONO	200 mV/47 kΩ 2,5 mV/47 kΩ
<b>Ausgänge</b> Druckklemmen für zwei Lautsprecherpaare 1-Koaxialbuchse ¼ inch für Kopfhörer TAPE 1/TAPE 2	<b>Outputs</b> Clamping terminals for two speaker pairs 1 coaxial jack, ¼ inch, for headphones TAPE 1/TAPE 2	<b>Sorties</b> Bornes à pression pour deux paires de haut-parleurs 1 prise coaxiale ¼" pour écouteurs TAPE 1/TAPE 2	<b>Uscite</b> morsetti di pressione per due coppie di diffusori 1 presa coassiale ¼" per cuffia TAPE 1/TAPE 2	8–16 Ohm
<b>Leistungsaufnahme</b> (maximal)	<b>Power input</b> (maximum)	<b>Consommation de courant</b> (maximum)	<b>Potenza assorbita</b> (massimo)	240 Watt
<b>Netzspannung</b> Model Europa Model USA/Kanada	<b>Mains voltage</b> European model US/Canadian model	<b>Voltage secteur</b> Modèle Europe Modèle USA/Canada	<b>Tensione di rete</b> modello Europa modello Stati Uniti/Canada	230 V/50 Hz 115 V/60 Hz
<b>Maße</b> (Breite × Höhe × Tiefe)	<b>Dimensions</b> (width × height × depth)	<b>Dimensions</b> (largeur × hauteur × profondeur)	<b>Dimensioni</b> (larghezza × altezza × profondità)	440 × 122 × 245 mm



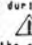


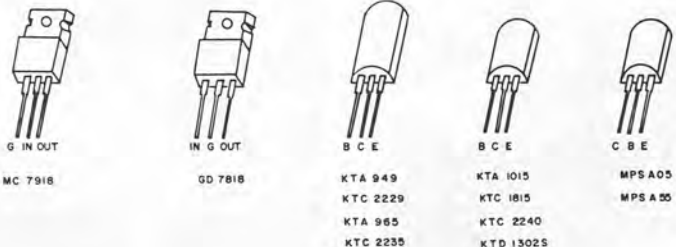


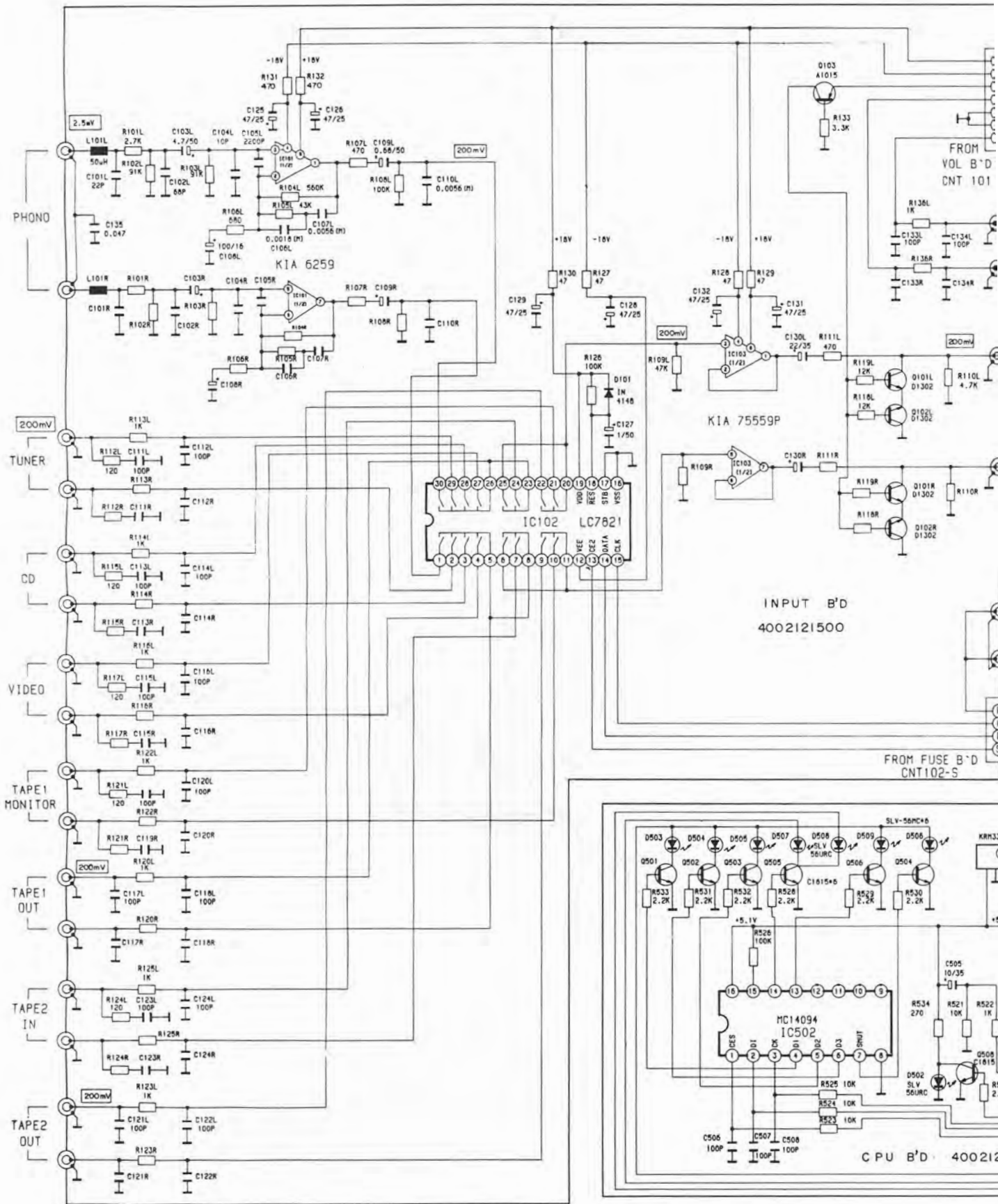


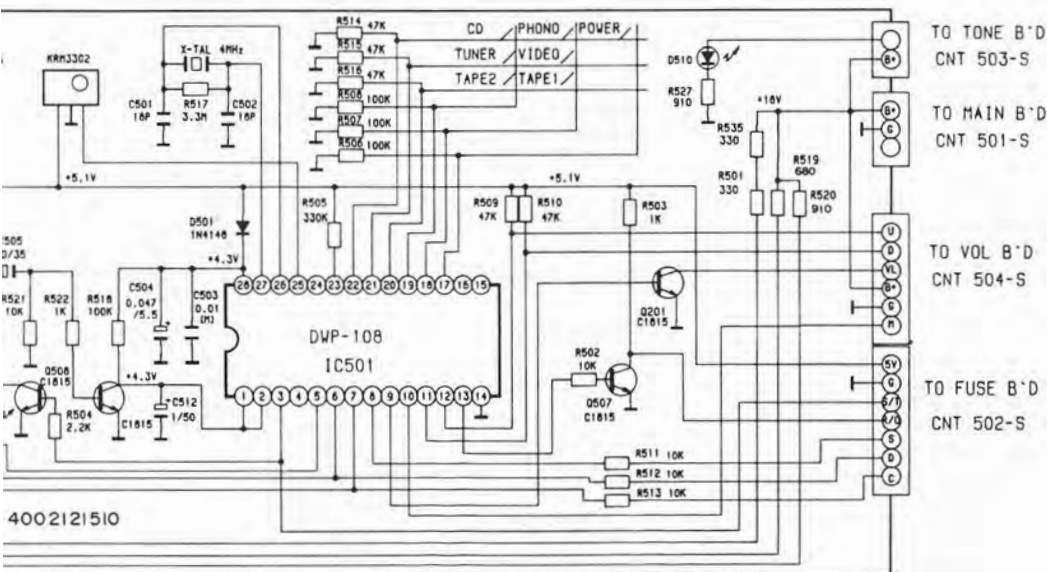
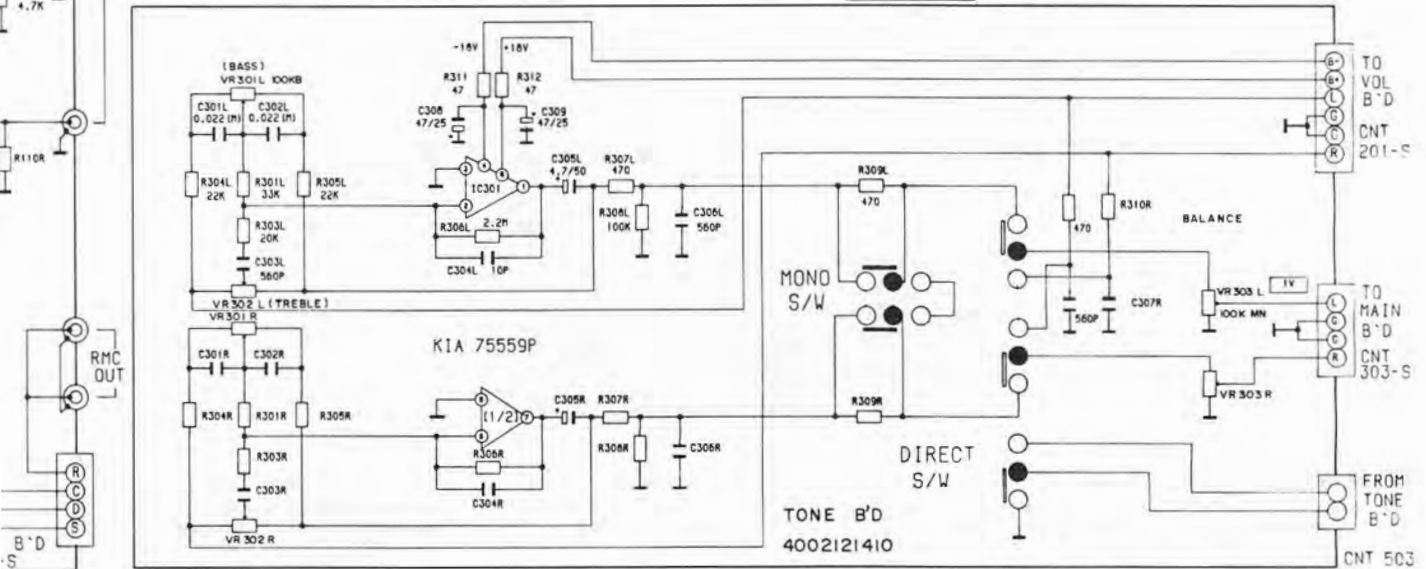
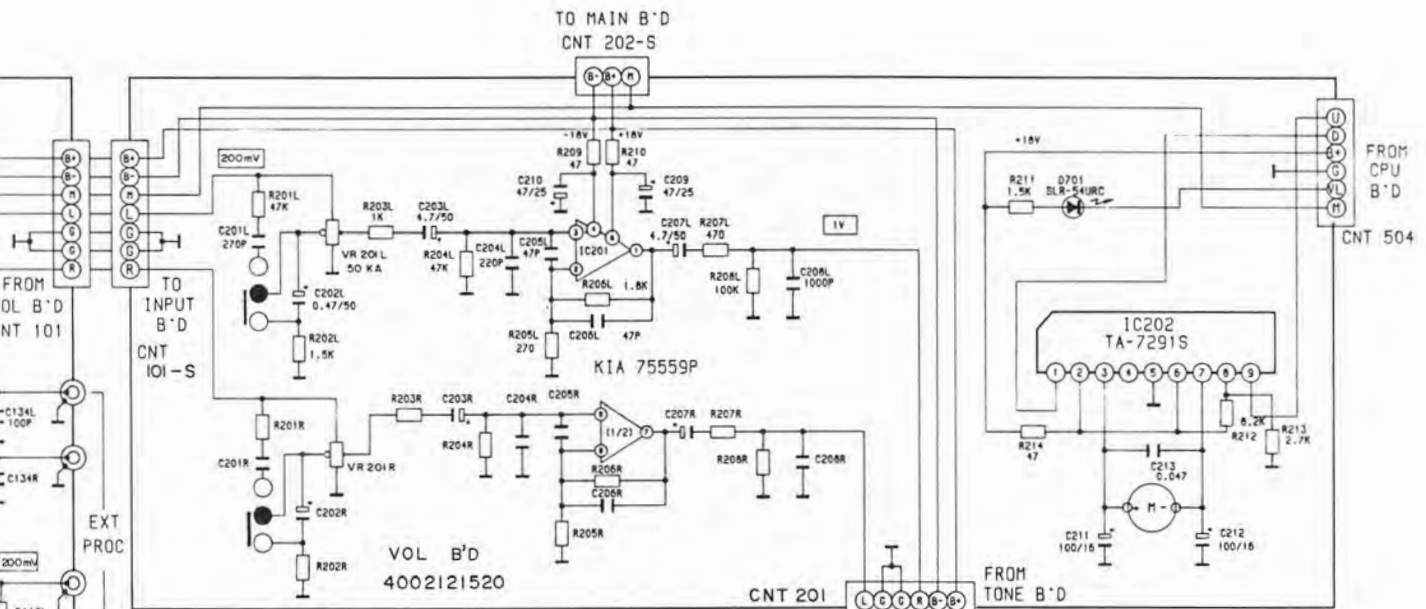


-NOTES 1. Resistance values are indicated in ohms unless otherwise specified (K=1,000 M=1,000,000)  
 2. Capacitance values are shown in microfarads unless otherwise noted (P=picofarads)

CAUTION: Safety precautions to be followed during servicing  
 1) Since these parts marked with  are critical parts for safety use the one described parts list.  
 2) Before returning the receiver to the customer make appropriate leakage current or resistance measurements to determine that exposed parts are properly insulated from the supply circuit.

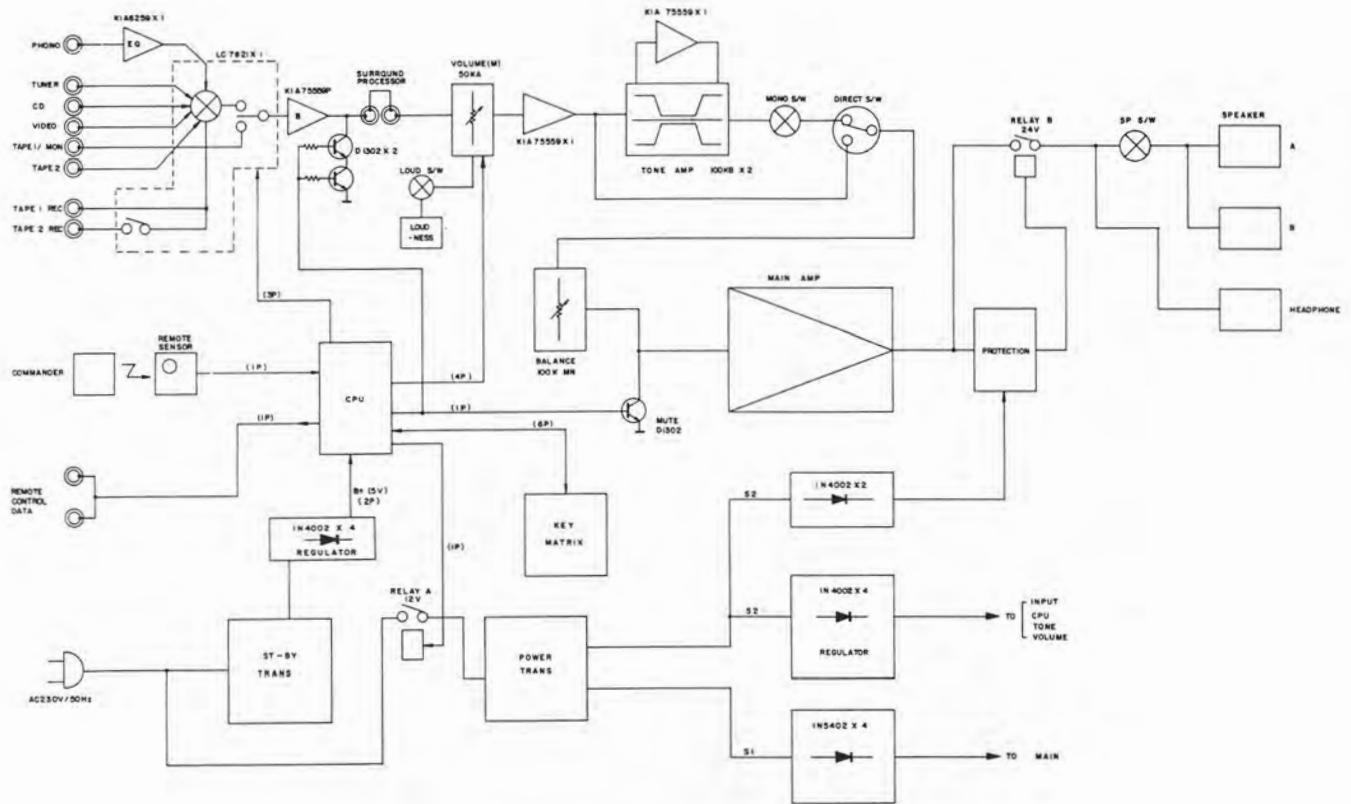








# BLOCK DIAGRAM

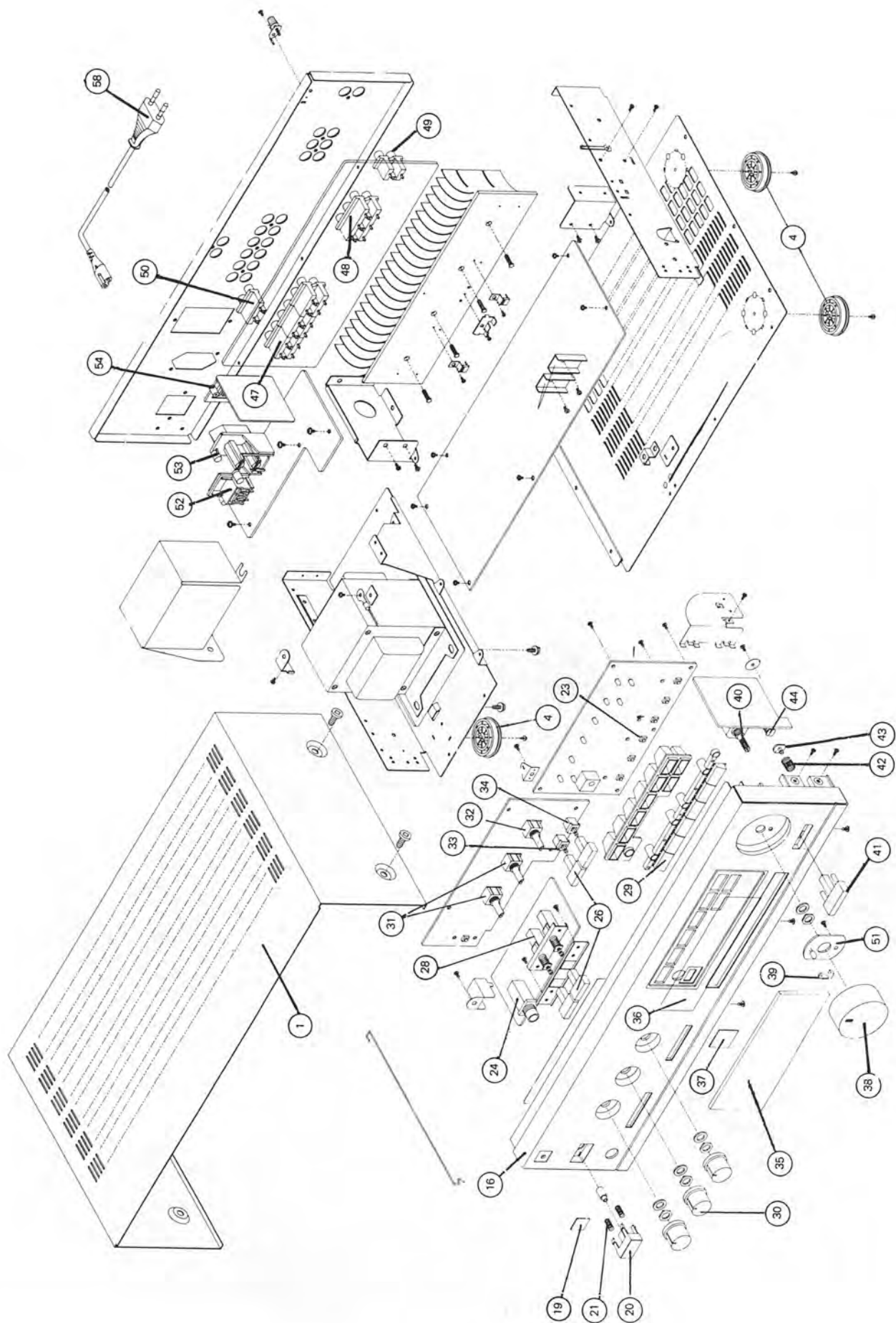


## LC 7821 IC 102 (SWITCHING IC)

IN No.	Terminal	Description
1	PHONO	
2	TUNER	
3	CD	Input/output terminals of audio signal of left channel
4	VIDEO	
5	TAPE 1 OUTPUT	Control to the inside
6	DATA OUTPUT	analog switch at the serial data
7	TAPE 2 INPUT	
8	TAPE 1 OUTPUT	
9	TAPE 2 OUTPUT	
10	TAPE 1/MONITOR	
11	DATA OUTPUT	
12	Vee	Negative power supply terminal (-18V)
13	STROBE	Serial Control terminal
14	DATA	Connect terminal of
15	CLOCK	MC68HC0591 (DWP-108)
16	Vss	Ground terminal
17	S	
18	RES	Reset terminal When power is turned ON the Condition of the analog switch is not determined, but when this terminal is „L“ all analog switches are OFF.
19	VDD	Power Supply terminal (+18V)
20	DATA OUTPUT	
21	TAPE 1/MONITOR	Input/Output terminals of
22	TAPE 2 OUTPUT	audio signal of right channel
23	TAPE 1 OUTPUT	
24	TAPE 2 INPUT	Control to the inside analog
25	DATA OUTPUT	switch at the serial date
26	TAPE 1 OUTPUT	
27	VIDEO	
28	CD	
29	TUNER	
30	PHONO	

## IC 501)

No.	Terminal	Operating	Remark
1	Reset		
2	Reset		Q509
3	PA7 (Power on/off)	0V	Q508, Q801
4	PA6		
5	PA5 (Strobe)		IC502
6	PA4 (Data)		IC502, IC102
7	PA3 (Clock)		IC502, IC102
8	PA2 (Strobe)		IC102
9	PA1 (Vol. LED)		Q201
10	PA0 (Mute)		Q419, Q101, Q102
11	PB5 (Vol. Down)		IC202
12	PB6 (Vol. up)		IC202
13	PB7 (Remote out)		Q507
14	Vss		
15	PC7		
16	PC6		
17	PC5 (Key scan 3)		Key Matrix
18	PC4 (Key scan 2)		Key Matrix
19	PC3 (Key scan 1)		Key Matrix
20	PC2 (Key in 3)		Key Matrix
21	PC1 (Key in 2)		Key Matrix
22	PC0 (Key in 1)		Key Matrix
23	PD5 (IRQ)	5V	R505
24	NC		
25	PD7 (Remocon in)		
26	X		OSC
27	EX		4MHz
28	VDD		



Ersatzteile · Replacement parts · Pièces détachées · CV 600

Pos.	Art.-Nr.	Bezeichnung
1	284 320	Gehäuseblech
4	289 241	Fuß
16	289 242	Frontblende
19	283 750	DUAL-Zeichen
20	289 244	Taste POWER
21	286 890	Druckfeder
22	289 245	Taste INSERT
23	286 901	Schalter
24	283 705	Kopfhörerbuchse
26	289 246	Taste
28	289 247	Schalter 2-fach
29	289 248	Taste FUNKTION
30	289 249	Knopf
31	284 664	Steller 100 K
32	283 676	Steller
33	283 675	Schalter
34	283 674	Schalter
35	289 251	Fenster
36	289 253	Dämpfungsfolie
37	289 254	Sensorfenster
38	289 255	Knopf VOLUME
39	289 256	Volume Leuchtstab
40	289 257	Steller mit Motor
41	289 258	Taste LOAD
42	287 459	Feder
43	289 259	Taste INSERT
44	289 260	Schalter
47	283 670	Cinchbuchse
48	289 263	Cinchbuchse 6-fach
49	289 264	Cinchbuchse 2-fach
50	289 265	Cinchbuchse
51	289 705	VOLUME-LED-Platte
52	289 266	Netzbuchse
53	289 267	Anschlußbuchse
54	289 268	Lautsprecherklemmen
58	279 596	Netzkabel Europa
		<b>Grundplatte</b>
C 413	284 774	Elyt-Kond. 4700 UF/50 V
C 414	284 774	Elyt-Kond. 4700 UF/50 V
L 401	286 910	Spule 0,5 UH
D 401	282 063	Diode DZ 12 BM
D 402	223 906	Diode 1 N 4148
bis		
D 404	223 906	Diode 1 N 4148
D 406	226 501	Diode 1 N 4002
D 407	282 063	Diode DZ 12 BM
D 408	226 501	Diode 1 N 4002
D 409	226 501	Diode 1 N 4002
D 410	282 061	Diode 1 N 5402
bis		
D 413	282 061	Diode 1 N 5402
D 414	282 146	Diode DZ 8,2
D 415	223 906	Diode 1 N 4148
D 416	226 501	Diode 1 N 4002
bis		
D 419	226 501	Diode 1 N 4002
IC 401	287 676	IC GD 7818

Pos.	Art.-Nr.	Bezeichnung
IC 402	287 677	IC MC 7918 CT
Relais B	289 277	Relais
Q 401	286 905	Transistor MPS A 56
Q 402	282 077	Transistor KTA 1015 Y
Q 403	282 052	Transistor KTC 2240 BL
Q 404	282 052	Transistor KTC 2240 BL
Q 405	273 293	Transistor 2 SC 1815 BL
Q 406	282 053	Transistor KTC 2229 Y
Q 407	282 054	Transistor KTA 949 Y
Q 408	286 904	Transistor MPS A 06
Q 409	282 094	Transistor KTC 2235 Y
Q 410	282 095	Transistor KTA 965 Y
Q 411	287 476	Transistor KTA 1490
Q 412	287 475	Transistor KTC 3854
Q 413	286 904	Transistor MPS A 06
bis		
Q 417	286 904	Transistor MPS A 06
PT 1	289 276	Netztrafo CV 600
		<b>Eingangs-Platte</b>
L 101	286 911	Spule 50 UH
D 101	223 906	Diode 1 N 4148
IC 101	289 271	IC KIA 6259
IC 102	286 912	IC LC 7821
IC 103	283 707	IC KIA 75559 P
Q 101	282 076	Transistor KTC 1815 Y
Q 102	282 076	Transistor KTC 1815 Y
Q 103	268 328	Transistor 2 SA 1015 Y
		<b>UP-Platte</b>
D 501	223 906	Diode 1 N 4148
D 502	282 084	LED SLV 56 URC
D 503	289 278	LED SLV 56 MC
bis		
D 507	289 278	LED SLV 56 MC
D 508	282 084	LED SLV 56 URC
D 509	289 278	LED SLV 56 MC
D 510	282 084	LED SLV 56 URC
IC 501	289 273	IC CPU DWP 108
IC 502	276 039	IC MC 14094 BCP C-MOS
Q 501	282 076	Transistor KTC 1815 Y
bis		
Q 509	282 076	Transistor KTC 1815 Y
X-TAL	281 411	Quartz 4 MHz
	289 270	IR-Empfänger KRM 33
		<b>VOLUME-Platte</b>
IC 201	283 707	IC KIA 75559 P
IC 202	287 489	IC TA 7291 S
Q 201	282 076	Transistor KTC 1815 Y
		<b>Klangplatte</b>
IC 301	283 707	IC KIA 75559 P
		<b>STAND BY-Platte</b>
IC 801	283 727	IC GD 7805
RELAIS A	289 274	Relais
Q 801	286 904	Transistor MPS A 06
TRANS	286 909	Trafo STAND BY
		Kopfhörer-Platte
D 701	289 458	LED SLR 54 URC (VOLUME-LED)
POSISTOR	282 068	Kaltleiter

Änderungen vorbehalten! Subject to change! Sous réserve de modification!

