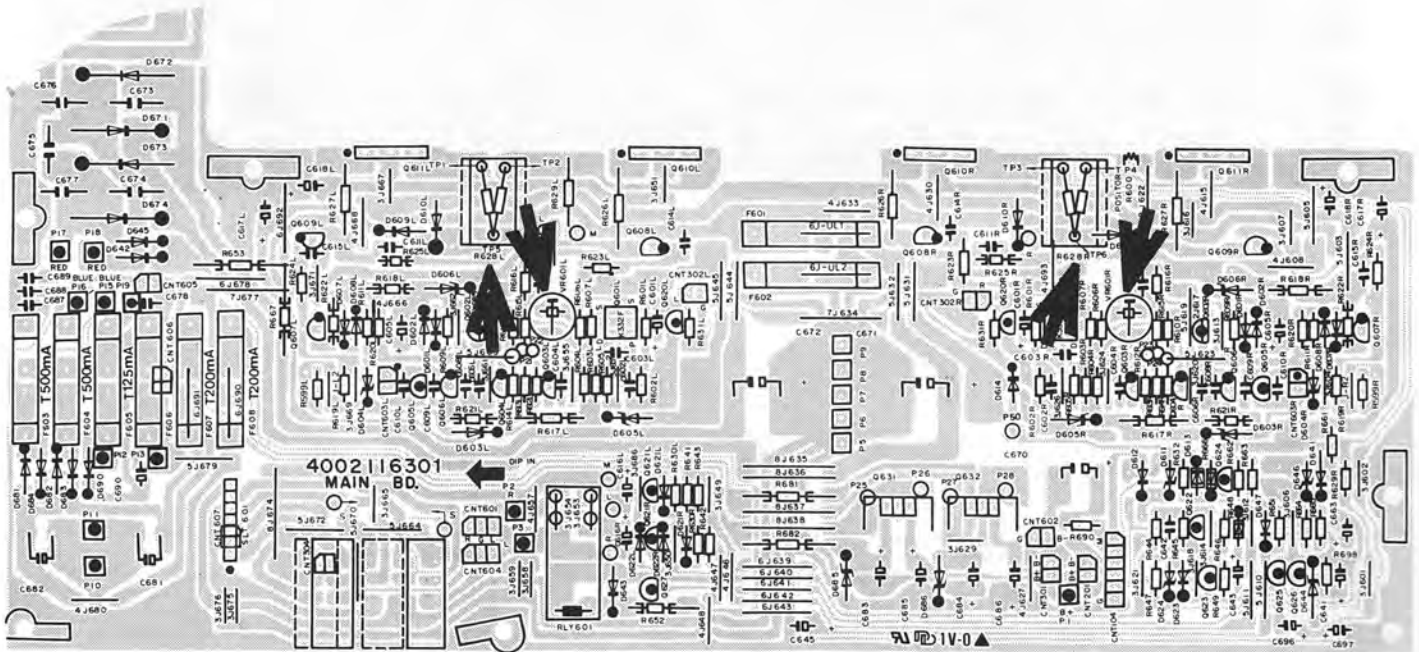




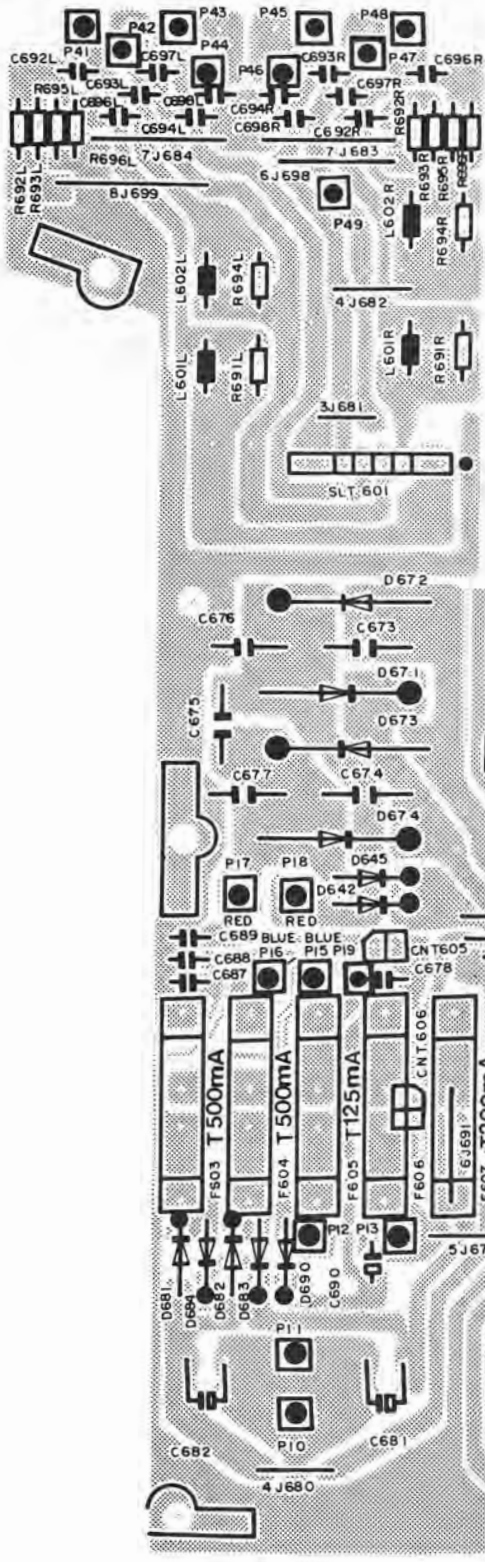
| Technische Daten (typische Werte) | Specifications (typical values) | Caractéristiques techniques (valeurs types) | Dati tecnici (valori tipici) | CV 6040 |
|---|---|---|--|---|
| Ausgangsleistung Sinusleistung (8 Ω DIN 1 kHz) Sinusleistung (8 Ω IHF 20 Hz–20 kHz, 0,03 %) Musikleistung (8 Ω) | Power output RMS continuous power output (8 Ω DIN 1 kHz) RMS continuous power output (8 Ω IHF 20 Hz–20 kHz, 0.03 %) music power (8 Ω) | Puissance de sortie Puissance sinus (8 ohms DIN 1 kHz) Puissance sinus (8 ohms IHF 20 Hz–20 kHz, 0,03 %) Puissance musique (8 ohms) | Potenza d'uscita capacità sinusoidale (8 ohm DIN 1 kHz) capacità sinusoidale (8 ohm IHF 20 Hz–20 kHz, 0,03 %) Potenza musicale (8 ohm) | 2×50 W 2×45 W 2×70 W |
| Leistungsbandbreite | Frequency response | Bande de puissance | Banda di potenza | 10–70000 Hz |
| Klirrfaktor bei 2/3 Leistung (1 kHz) | Harmonic distortion at 2/3 power (1 kHz) | Distorsion à 2/3 de puissance (1 kHz) | Distorsione armonica a 2/3 de rendimento (1 kHz) | < 0,01 % |
| Fremdspannungsabstand bezogen auf Nennleistung Phono-Eingang Hochpegel-Eingänge (CD, VIDEO, TAPE, TUNER) | Signal/noise ratio referred to rated power output Phono input High-level inputs (CD, VIDEO, TAPE, TUNER) | Rapport non pondéré son/bruit par rapport à la puissance nominale Entrée Phono Entrées haut niveau (CD, VIDEO, TAPE, TUNER) | Selettività riferita alla potenza nominale ingresso phono ingressi ad alte impedenze (CD, VIDEO, TAPE, TUNER) | 70 dB 90 dB |
| Übersprechdämpfung | Crosstalk attenuation | Diaphonie | Diafonia | 80 dB |
| Eingänge CD, VIDEO, TAPE, TUNER PHONO | Inputs CD, VIDEO, TAPE, TUNER PHONO | Entrées CD, VIDEO, TAPE, TUNER PHONO | Ingressi CD, VIDEO, TAPE, TUNER PHONO | 200 mV/47 kΩ 2,5 mV/47 kΩ |
| Ausgänge Druckklemmen für zwei Lautsprecherpaare 1-Koaxialbuchse ¼ inch für Kopfhörer TAPE 1/TAPE 2 | Outputs Clamping terminals for two speaker pairs 1 coaxial jack, ¼ inch, for headphones TAPE 1/TAPE 2 | Sorties Bornes à pression pour deux paires de haut-parleurs 1 prise coaxiale ¼" pour écouteurs TAPE 1/TAPE 2 | Uscite morsetti di pressione per due coppie di diffusori 1 presa coassiale ¼" per cuffia TAPE 1/TAPE 2 | 8–16 Ohm |
| Leistungsaufnahme (maximal) | Power input (maximum) | Consommation de courant (maximum) | Potenza assorbita (massimo) | 200 Watt |
| Netzspannung Model Europa Model USA/Kanada Model UK | Mains voltage European model US/Canadian model UK model | Voltage secteur Modèle Europe Modèle USA/Canada Modèle Royaume-Uni | Tensione di rete modello Europa modello Stati Uniti/Canada modello GB | 220 V/50 Hz 120 V/60 Hz 240 V/50 Hz |
| Maße (Breite × Höhe × Tiefe) | Dimensions (width × height × depth) | Dimensions (largeur × hauteur × profondeur) | Dimensioni (larghezza × altezza × profondità) | 440 × 82 × 245 mm |

Abgleichanleitung-Alignment Instruction

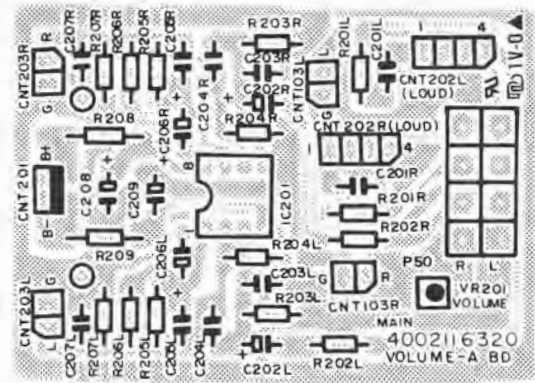
| Signalquelle Signal source | Einstellung Signalquelle Signal source adjustment | Einstellung Gerät Unit adjustment | Anzeigegerät Anschluß Indicator connection | Abgleichposition Adjustment position | Abgleich, Bemerkung Alignment, Remarks |
|--------------------------------------|--|---|---|---|---|
| Ruhestrom · Quiescent Current | | | | | |
| | | Power: On Volume: Minimum Speaker: On Speaker: 8 Ω Lastwiderstand Load resistor Gerät 4 Minuten warmlaufen lassen Wait about 4 minutes | DC-Voltmeter an/to TP 5-GND TP 6-GND | VR 601 L VR 601 R | 0 V ± 50 mV 0 V ± 50 mV |

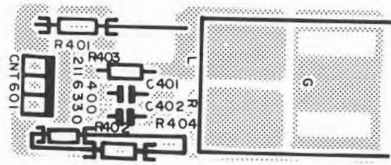
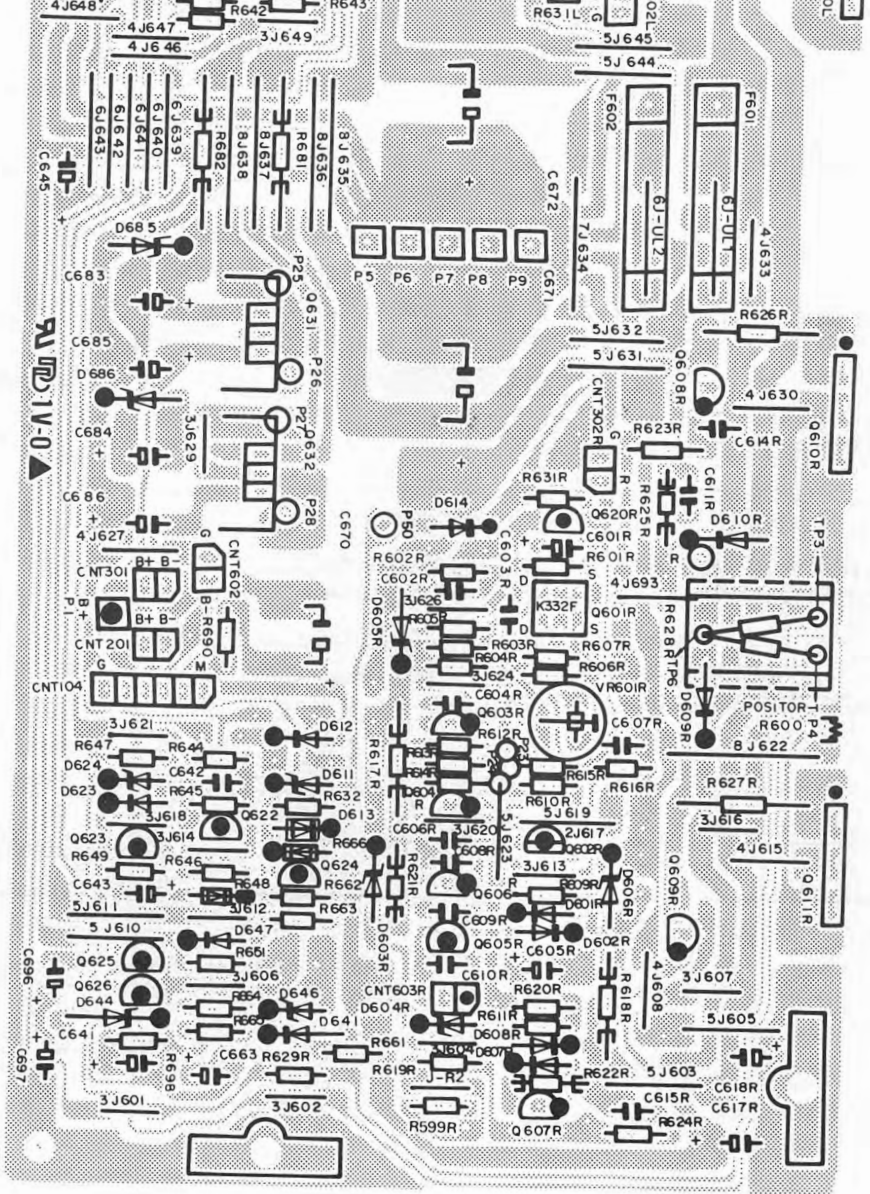


Grundplatte
Main P.C.B.
Platine principale



Volumenplatte
P.C.B. Volume
Platine volume

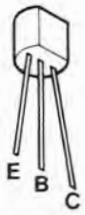




Kopfhörerbuchsenplatte
P.C.B. headpiece-jack
Platine prise-casque



Biasplatte
P.C.B. Bias
Platine depolarisation



MPS A 05
MPS A 55
MPS 9633



KTA 817 A
2 SA 817 A
KTA 949 Y
2 SA 949 Y
KTA 1015 GR
2 SA 1015
KTA 1302
2 SC 1302
KTC 1627 A
2 SC 1627 A
KTC 1815 Y
2 SC 1815 Y
KTC 2229 Y
2 SC 2229 Y
KTC 2240
2 SC 2240

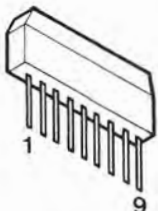


2 SD 1406 GR
2 SB 0366



NJM 2068 DD
KIA 75559

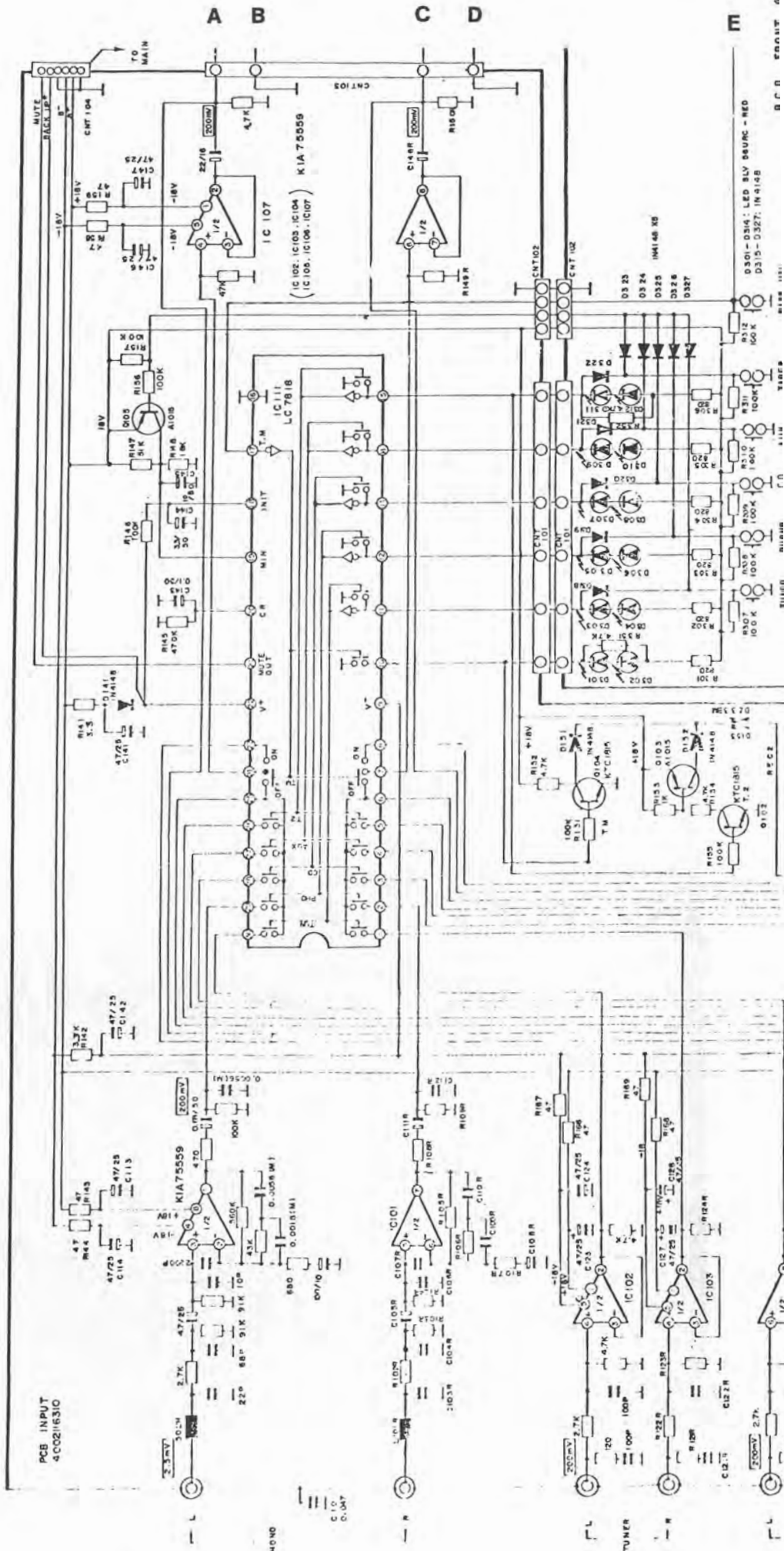
2 SA 1489
2 SC 3853
2 SA 1491
2 SC 3855

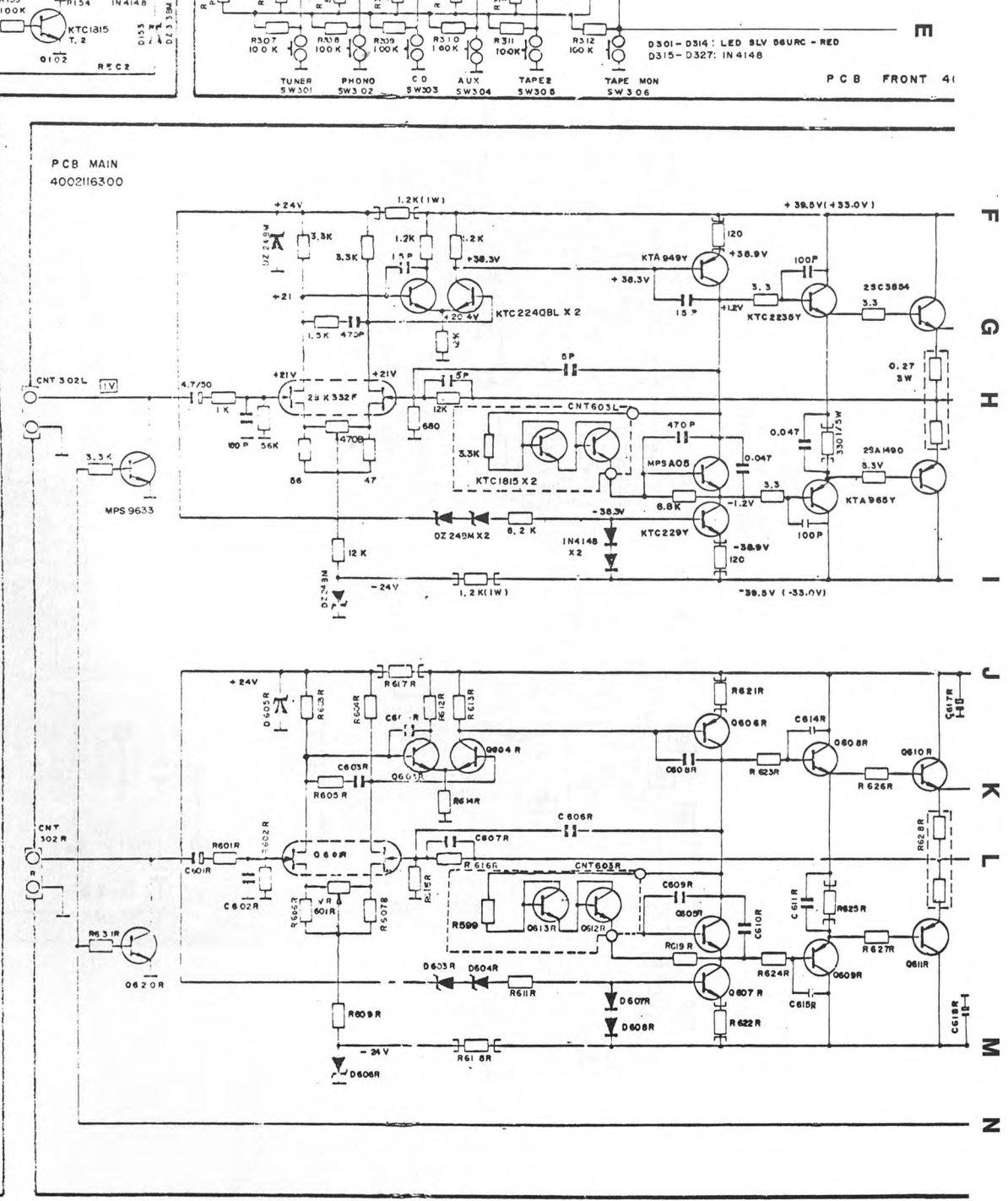
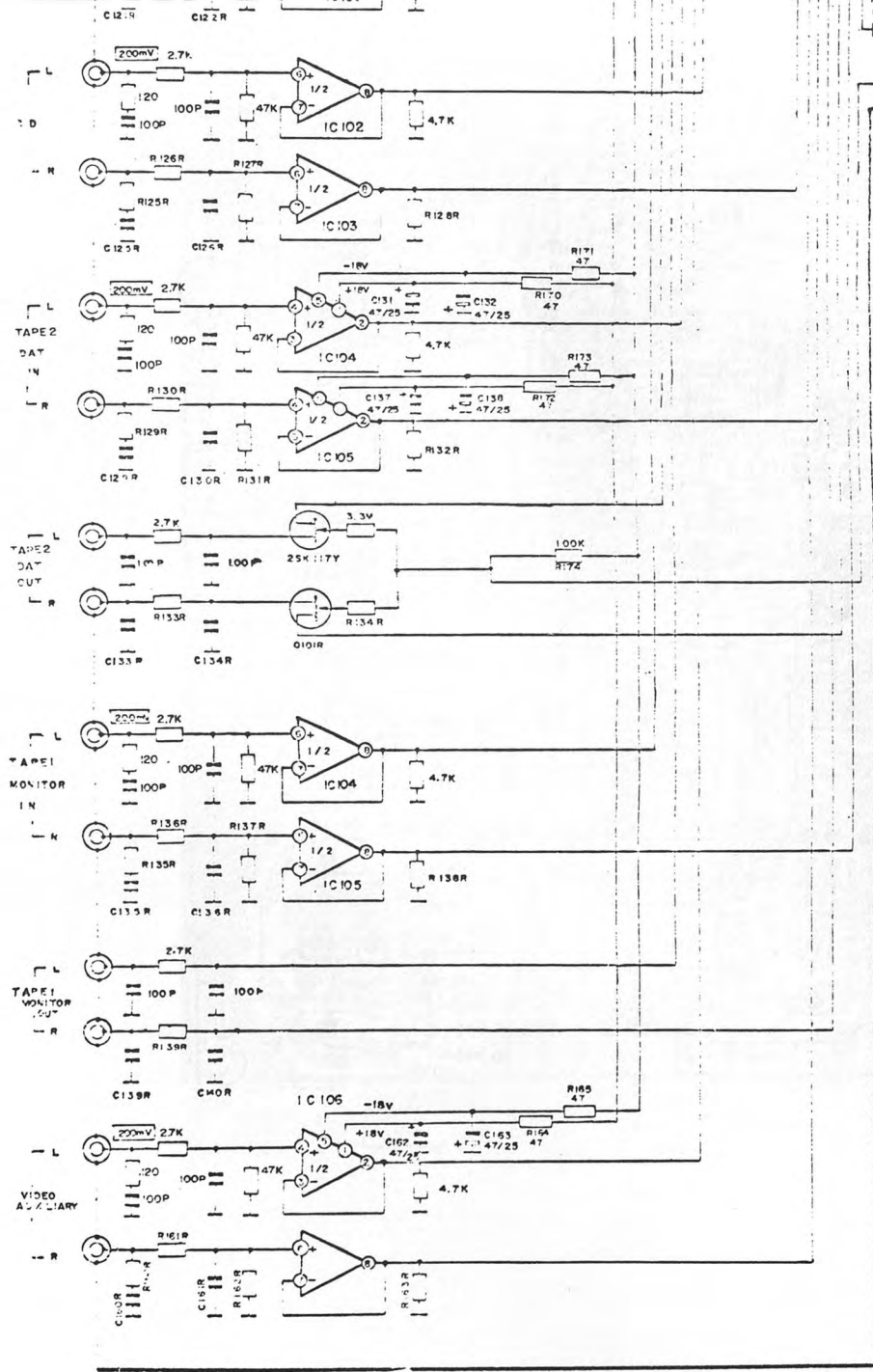


KIA 75559 S
NJM 4360 S



2 SK 332 F





9

F
G
H
I
J
K
L
M
N

M

PCB FRONT 41

D301 - D314: LED 8LV 66URC - RED
D315 - D327: IN 4148

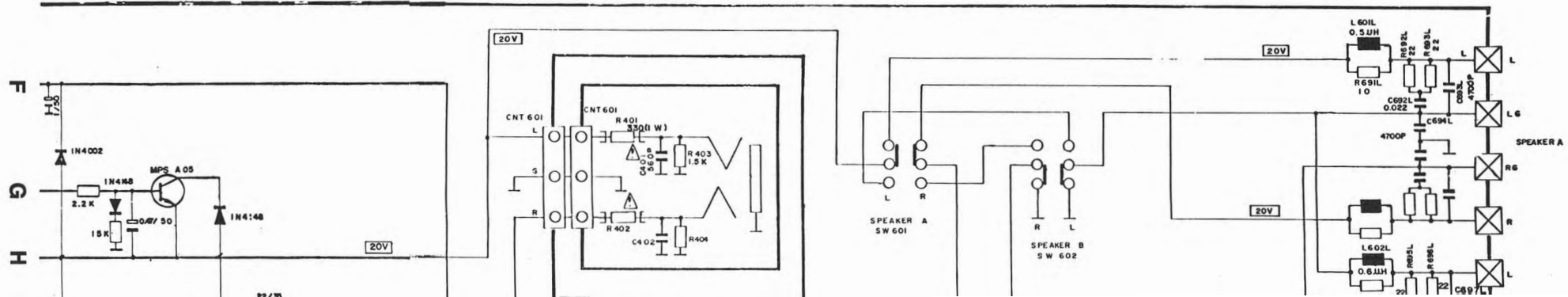
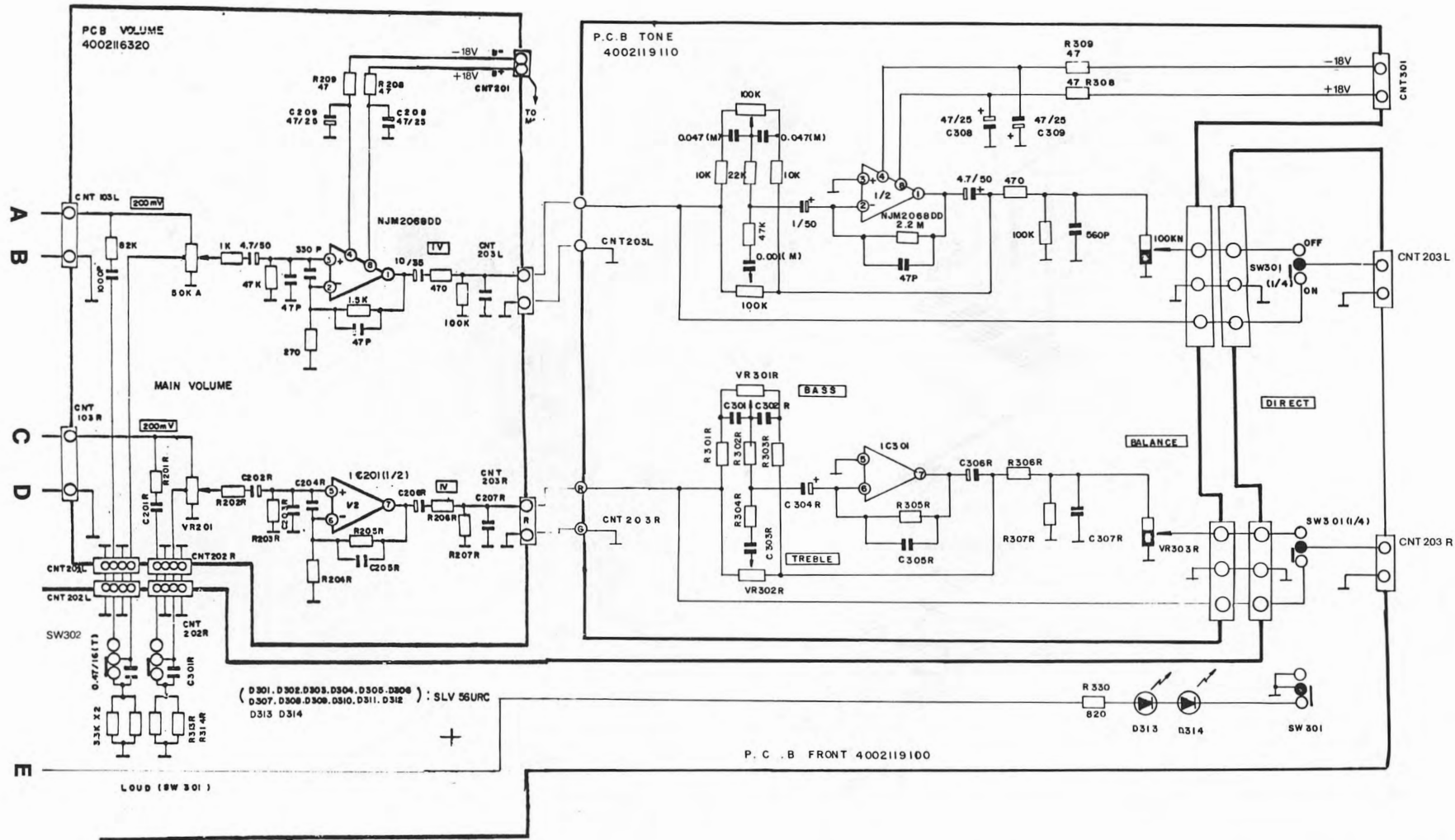
TUNER SW301
PHONO SW302
CD SW303
AUX SW304
TAPE SW305
TAPE MON SW306

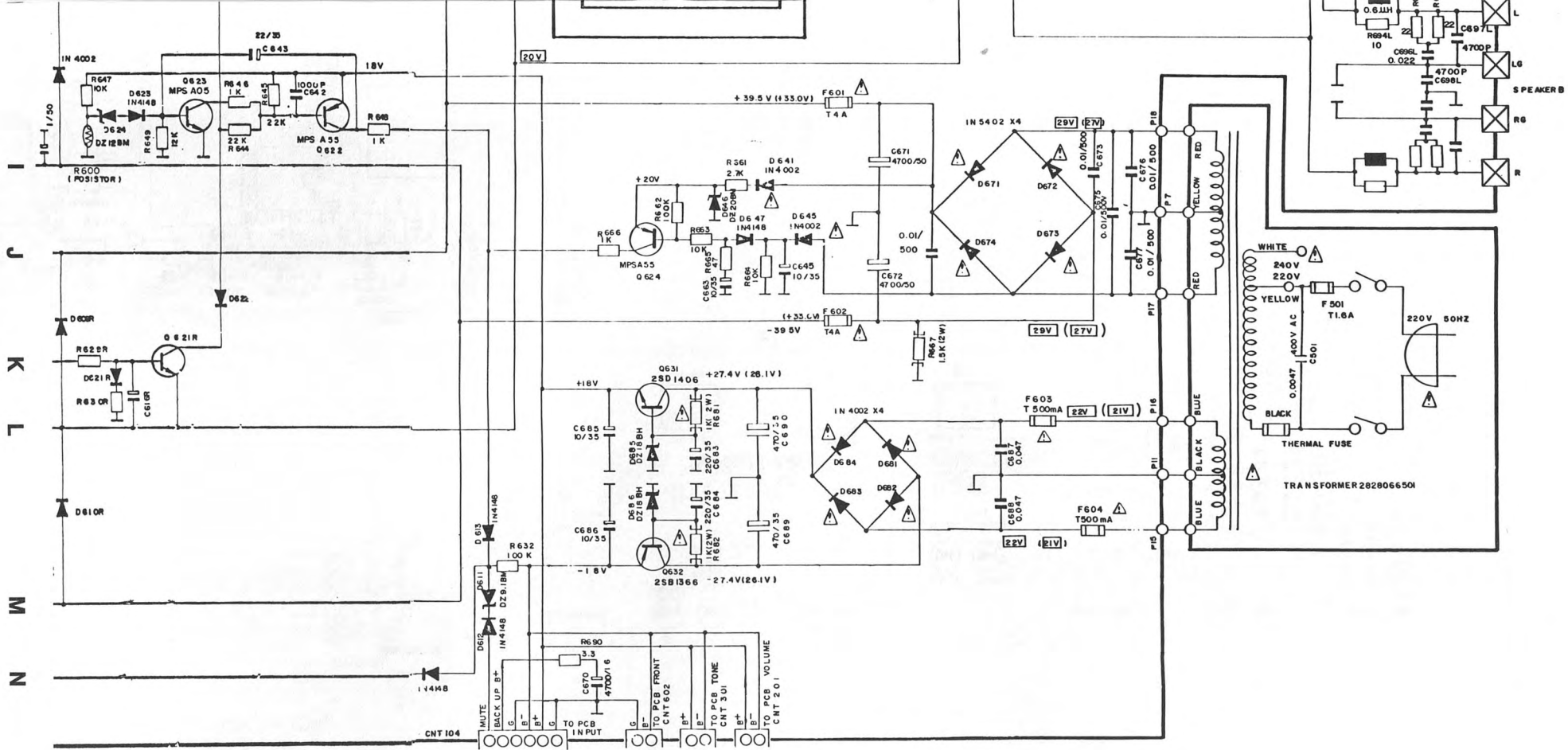
PCB MAIN
4002116300

CMT 302L
MPS 9633

CMT 302R
MPS 9633

PCB MAIN
4002116300





I
J
K
L
M
N

CNT 104
MUTE
BACK UP B+
B+
B+
G
TO PCB INPUT
G
TO PCB FRONT
CNT 602
B+
B+
TO PCB TONE
CNT 301
B+
B+
TO PCB VOLUME
CNT 201

TRANSFORMER 282806650I

SPEAKER B

240V
220V
220V
100V AC
0.004T
THERMAL FUSE

220V 50HZ

+39.5V (+133.0V)

+27.4V (+86.1V)

-27.4V (-86.1V)

29V (27V)

29V (27V)

22V (21V)

22V (21V)

20V

18V

R600 (POSITION)

D621

D610R

14K8

CNT 104

MUTE

BACK UP B+

B+

B+

G

TO PCB INPUT

G

TO PCB FRONT

CNT 602

B+

B+

TO PCB TONE

CNT 301

B+

B+

TO PCB VOLUME

CNT 201

TRANSFORMER 282806650I

240V

220V

220V

100V AC

0.004T

THERMAL FUSE

220V 50HZ

SPEAKER B

+39.5V (+133.0V)

+27.4V (+86.1V)

-27.4V (-86.1V)

29V (27V)

29V (27V)

22V (21V)

22V (21V)

20V

18V

R600 (POSITION)

D621

D610R

14K8

CNT 104

MUTE

BACK UP B+

B+

B+

G

TO PCB INPUT

G

TO PCB FRONT

CNT 602

B+

B+

TO PCB TONE

CNT 301

B+

B+

TO PCB VOLUME

CNT 201

TRANSFORMER 282806650I

240V

220V

220V

100V AC

0.004T

THERMAL FUSE

220V 50HZ

SPEAKER B

+39.5V (+133.0V)

+27.4V (+86.1V)

-27.4V (-86.1V)

29V (27V)

29V (27V)

22V (21V)

22V (21V)

20V

18V

R600 (POSITION)

D621

D610R

14K8

CNT 104

MUTE

BACK UP B+

B+

B+

G

TO PCB INPUT

G

TO PCB FRONT

CNT 602

B+

B+

TO PCB TONE

CNT 301

B+

B+

TO PCB VOLUME

CNT 201

TRANSFORMER 282806650I

240V

220V

220V

100V AC

0.004T

THERMAL FUSE

220V 50HZ

SPEAKER B

+39.5V (+133.0V)

+27.4V (+86.1V)

-27.4V (-86.1V)

29V (27V)

29V (27V)

22V (21V)

22V (21V)

20V

18V

R600 (POSITION)

D621

D610R

14K8

CNT 104

MUTE

BACK UP B+

B+

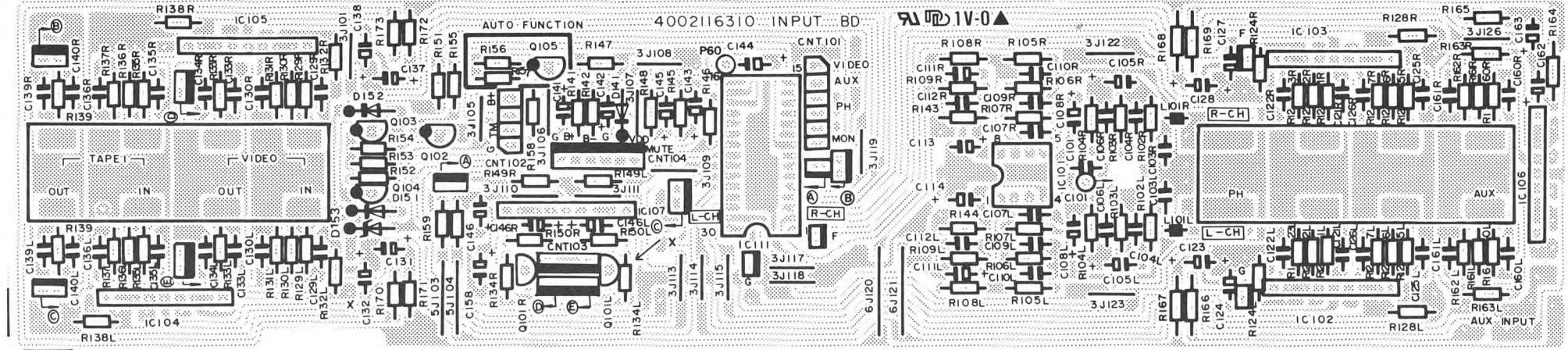
B+

G

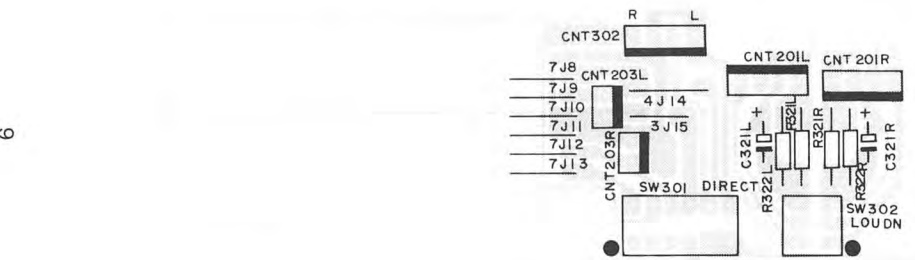
TO PCB INPUT

G

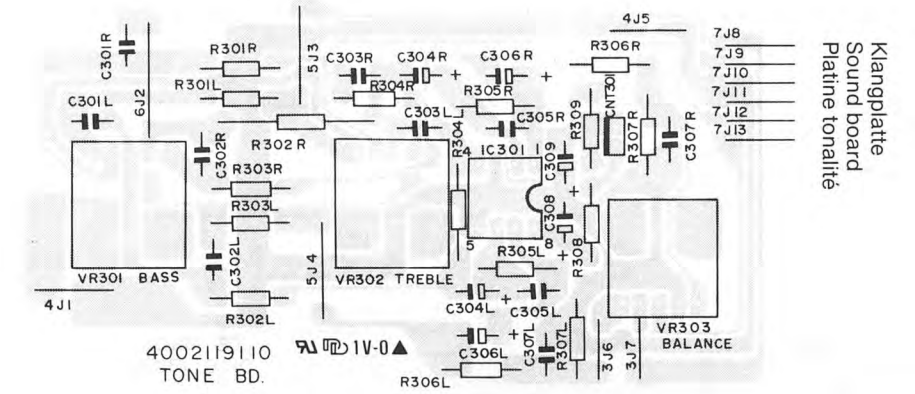
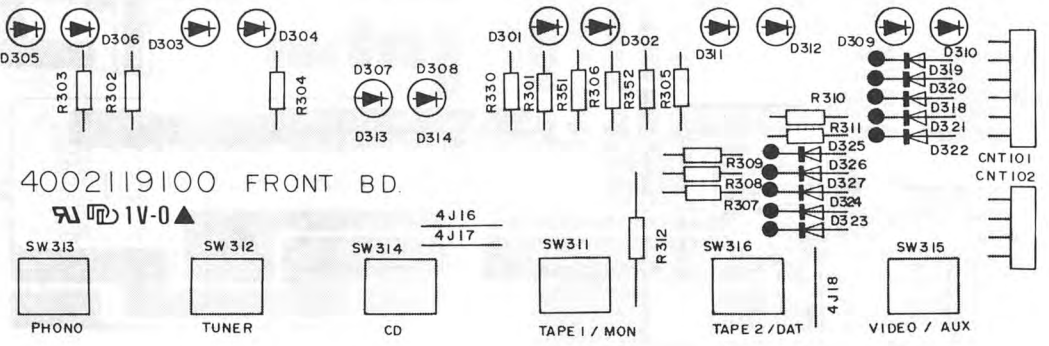
TO PCB FRONT



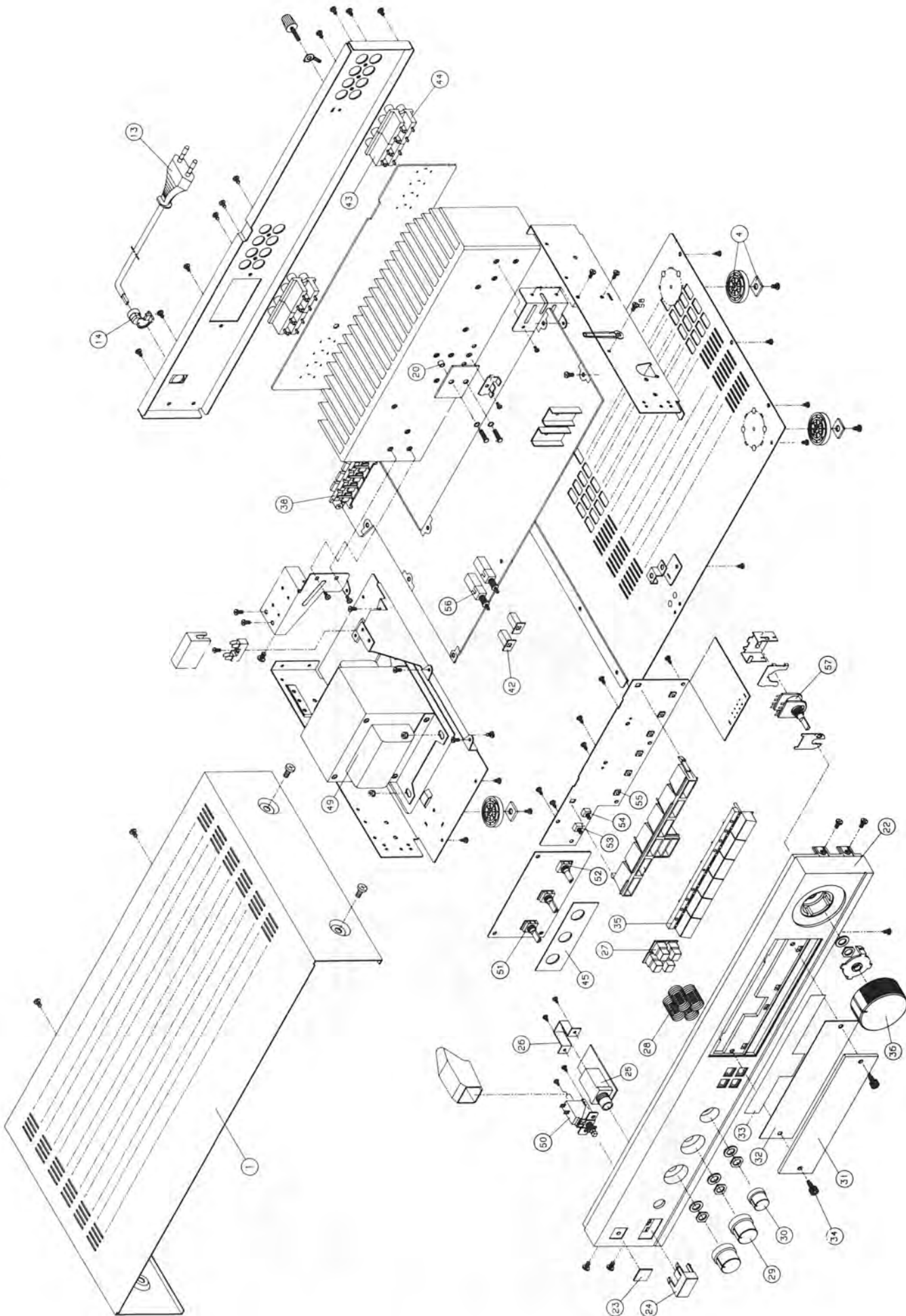
Eingangssplatte
P.C.B. sockets
Platine prises



Frontplatte
P.C.B. controls
Platine commandes



Klangplatte
Sound board
Platine tonalité



Ersatzteile · Replacement parts · Pièces détachées

| Pos. | Art.-Nr. | Bezeichnung |
|--------------------|----------|--|
| 1 | 284 350 | Gehäuseblech |
| 4 | 283 710 | Gerätefuß |
| 13 | 283 750 | Dual-Zeichen |
| 14 | 237 548 | Kabeldurchführung |
| 22 | 284 353 | Frontblende |
| 23 | 283 750 | Dual-Zeichen |
| 24 | 283 665 | Netztaste |
| 25 | 283 672 | Kopfhörerbuchse |
| 27 | 284 326 | Taste |
| 29 | 283 660 | Drehknopf |
| 30 | 283 661 | Drehknopf |
| 31 | 284 663 | Fenster |
| 32 | 284 351 | Displayeinlage |
| 33 | 283 663 | Dämpfungsfolie |
| 34 | 284 773 | Schraube |
| 35 | 283 666 | Taste |
| 36 | 283 664 | Drehknopf |
| 38 | 282 148 | Lautsprecherklemmen |
| 42 | 282 145 | Tastenverlängerung |
| 43 | 283 670 | Cinchbuchse |
| 44 | 283 671 | Cinchbuchse |
| 49 | 284 352 | Netztrafo |
| 50 | 282 119 | Netzschalter |
| 51 | 284 664 | Steller 100 k Ω \times 2 (Bass, Treble) |
| 52 | 283 676 | Steller 100 k Ω (Balance) |
| 53 | 283 674 | Schalter (Direkt) |
| 54 | 283 675 | Schalter (Loudness) |
| 55 | 280 197 | Schalter (Funktion) |
| 56 | 282 132 | Schalter (Speaker) |
| 57 | 282 130 | Steller 50 k \times 2 (Volume) |
| Grundplatte | | |
| C 671 | 284 774 | Elyt.-Kond. 4700 UF/50 V |
| C 672 | 284 774 | Elyt.-Kond. 4700 UF/50 V |
| L 601 | 282 090 | Spule 0,5 UH |
| L 602 | 282 090 | Spule 0,5 UH |
| D 603 | 282 098 | Diode DZ 24 |
| bis | | |
| D 606 | 282 098 | Diode DZ 24 |
| D 607 | 223 906 | Diode 1 N 4148 |
| D 608 | 223 906 | Diode 1 N 4148 |
| D 609 | 226 501 | Diode 1 N 4002 |
| D 610 | 226 501 | Diode 1 N 4002 |
| D 611 | 282 062 | Diode DZ 9,1 BM |
| D 612 | 223 906 | Diode 1 N 4148 |
| bis | | |
| D 622 | 223 906 | Diode 1 N 4148 |
| D 623 | 223 906 | Diode 1 N 4148 |
| D 624 | 282 063 | Diode DZ 12 |
| D 641 | 226 501 | Diode 1 N 4002 |
| D 645 | 226 501 | Diode 1 N 4002 |
| D 646 | 282 065 | Diode DZ 20 BM |
| D 647 | 223 906 | Diode 1 N 4148 |
| D 671 | 282 061 | Diode 1 N 5402 |
| bis | | |
| D 674 | 282 061 | Diode 1 N 5402 |

| Pos. | Art.-Nr. | Bezeichnung |
|---------------------------|----------|-------------------------|
| D 681 | 226 501 | Diode 1 N 4002 |
| bis | | |
| D 684 | 226 501 | Diode 1 N 4002 |
| D 685 | 282 064 | Diode DZ 18 |
| D 686 | 282 064 | Diode DZ 18 |
| VR 601 | 282 072 | Steller 470 Ω |
| Q 601 | 282 051 | Transistor 2 SK 332 F |
| Q 603 | 282 052 | Transistor KTC 2240 BL |
| Q 604 | 282 052 | Transistor KTC 2240 BL |
| Q 605 | 272 751 | Transistor MPS 9633 C |
| Q 606 | 282 054 | Transistor KTA 949 Y |
| Q 607 | 282 053 | Transistor KTC 2229 Y |
| Q 608 | 282 094 | Transistor KTC 2235 Y |
| Q 609 | 282 095 | Transistor KTA 965 Y |
| Q 610 | 282 097 | Transistor 2 SC 3854 |
| Q 611 | 282 096 | Transistor 2 SA 1490 |
| Q 620 | 282 059 | Transistor MPS A 05 |
| Q 621 | 282 059 | Transistor MPS A 05 |
| Q 622 | 282 060 | Transistor MPS A 55 |
| Q 623 | 282 059 | Transistor MPS A 05 |
| Q 624 | 282 060 | Transistor MPS A 55 |
| D 631 | 278 195 | Transistor 2 SD 1406 GR |
| D 632 | 283 668 | Transistor 2 SB 1366 Y |
| Eingangsplatte | | |
| L 101 | 282 079 | Spule 50 UH |
| D 141 | 223 906 | Diode 1 N 4148 |
| D 151 | 223 906 | Diode 1 N 4148 |
| D 152 | 223 906 | Diode 1 N 4148 |
| D 153 | 282 078 | Diode DZ 3,3 B |
| IC 101 | 282 074 | IC NJM 2068 DD |
| IC 102 | 283 669 | IC KIA 75559 S |
| bis | | |
| IC 107 | 283 669 | IC KIA 75559 S |
| IC 111 | 282 085 | IC LC 7818 |
| Q 101 | 283 208 | Transistor 2 SK 117 BL |
| Q 102 | 282 076 | Transistor KTC 1815 Y |
| Q 103 | 283 330 | Transistor KTA 1015 GR |
| Q 104 | 282 076 | Transistor KTC 1815 Y |
| Q 105 | 283 330 | Transistor KTA 1015 GR |
| Volume/Klangplatte | | |
| IC 201/IC 301 | 282 074 | IC NJM 2068 DD |
| Frontplatte | | |
| D 301 | 282 084 | LED SLV 56 URC |
| bis | | |
| D 314 | 282 084 | LED SLV 56 URC |
| D 318 | 223 906 | Diode 1 N 4148 |
| bis | | |
| D 327 | 223 906 | Diode 1 N 4148 |
| Q 614 | 282 076 | Transistor KTC 1815 Y |
| Q 615 | 282 076 | Transistor KTC 1815 Y |
| | 283 571 | Bedienungsanleitung |
| | 283 706 | Faltschachtel |
| | 283 662 | Einlage |

Änderungen vorbehalten! Subject to change! Sous réserve de modification!